



AGRI PICKS

A Daily Report on Agricultural Commodities

Wednesday, August 19, 2020

TODAY'S PICKS

BUY KAPAS ON DIPS

AGRI BUZZ

- The government is mulling a reduction in interest rate on delayed sugarcane payments beyond 14 days to 7% from 15% currently, a senior government official said. The matter is currently in the preliminary stage.
- The National Commodity & Derivatives Exchange has started inviting applications for the position of managing director and chief executive officer as the three-year term of Vijay Kumar Venkataraman will end in January.
- Farmers in Gujarat have sown kharif crops over 95% of the average area sown in the past three years, as per the weekly data of the state agriculture department.
- India's overseas shipments of agri-commodities jumped 23.2% on year to 207.3 bln rupees during Mar-Jun, a government release said. The central government imposed a nationwide lockdown to contain the spread of the coronavirus towards the end of March, which was partially lifted in June.
- India has received 9.0 mm rainfall yesterday, 12% above normal, the India Meteorological Department said. With rainfall above normal for the 10th consecutive day, overall rain this monsoon season remained higher than the normal.

Futures		Spot
Contract/spot	JEERA - AUG20	Unjha
Rate	14200	14020
% chg	0.78	0.53
1 week low	13900	13945.45
1 week High	14320	14052.65
Futures		Spot
Contract/spot	CHANA - AUG20	Bikaner
Rate	4405	4395.35
% chg	0.87	0.78
1 week low	4242	4247.5
1 week High	4409	4400
Futures		Spot
Contract/spot	SOYABEAN - AUG20	Indore
Rate	3760	3844
% chg	0.59	0.39
1 week low	3642	3816
1 week High	3780	3844
Futures		Spot
Contract/spot	CASTOR SEED - AUG20	Deesa
Rate	3952	4075
% chg	0.76	0.83
1 week low	3888	4041.65
1 week High	3952	4088.55
Futures		Spot
Contract/spot	RUBBER - SEP20	Kottayam
Rate	13078	13125
% chg	-1.67	-1.13
1 week low	13125	0
1 week High	13275	0

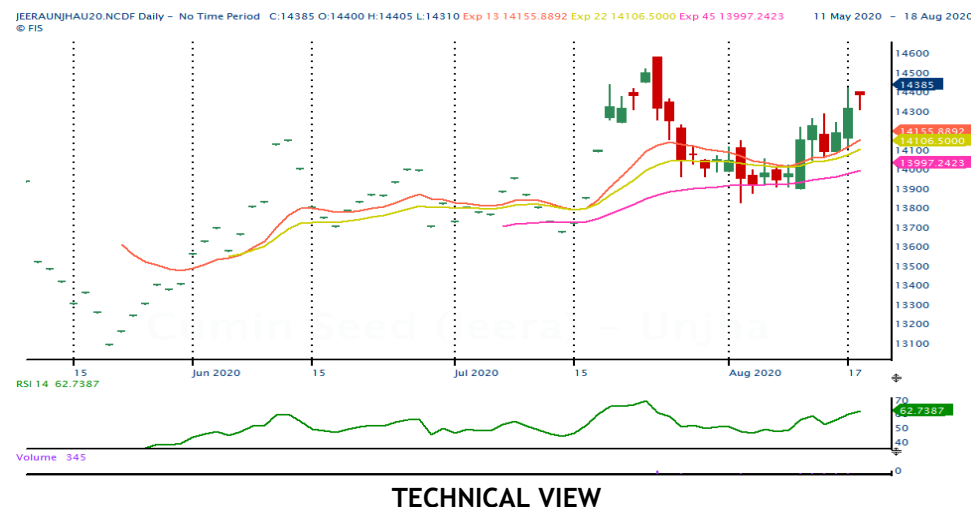
Futures		Spot
Contract/spot	TURMERIC - AUG20	Nizamabad
Rate	5704	5562.5
% chg	0	-0.07
1 week low	5674	5562.5
1 week High	5778	5600
Futures		Spot
Contract/spot	GUAR SEED10 - AUG20	Jodhpur
Rate	3848	4091.65
% chg	0	1.67
1 week low	3770	3923.5
1 week High	4025	4091.65
Futures		Spot
Contract/spot	REFINED SOYA OIL - AUG20	Kandla
Rate	860	858.45
% chg	0.16	0.16
1 week low	853.3	854.8
1 week High	866.6	859.9
Futures		Spot
Contract/spot	KAPAS - NOV20	Rajkot
Rate	931.5	925.85
% chg	2.19	0.53
1 week low	911.5	921
1 week High	936.5	926.3
Futures		Spot
Contract/spot	MAIZE - Feed/Industrial Grade	Gulabbagh
Rate	0	1250
% chg	0	0.2
1 week low	0	1246.75
1 week High	0	1255.4





Futures		Spot
Contract/spot	CORIANDER - AUG20	Kota
Rate	6630	6618.4
% chg	2	-0.24
1 week low	6472	6610
1 week High	6630	6679.4
Futures		Spot
Contract/spot	Guar Gum Refined Splits - AUG20	Jodhpur
Rate	6380	6497.2
% chg	2.99	3.13
1 week low	6014	6186.25
1 week High	6487	6568.75
Futures		Spot
Contract/spot	RAPE MUSTARD SEEDS - AUG20	Jaipur
Rate	5340	5300
% chg	0.28	0.45
1 week low	5201	5244.25
1 week High	5360	5300
Futures		Spot
Contract/spot	COTTON SEED OIL CAKE AKOLA -	AKOLA
Rate	1915	2037.8
% chg	2.96	0.47
1 week low	1848	2012.4
1 week High	1915	2037.8
Futures		Spot
Contract/spot	BARLEY - AUG20	Jaipur
Rate	1345	0
% chg	1.28	0
1 week low	1325.5	0
1 week High	1360	0

SPICES COMPLEX

Market Buzz

- On Tuesday, Jeera September futures on NCDEX stayed in the vicinity of the three week highs hit in the previous session on steady demand amidst fall in arrivals in the spot market.
- Exports of jeera were at 210,000 tn, up 16% from 180,300 tn in 2018-19 according to the Spices Board.
- According to the Spices Board, jeera production for the year 2019-20 is pegged at 540750 tonnes, down 21.8 per cent on yoy basis.
- According to the Spices Board, exports rose 27 per cent during Apr-Dec 2019 to 167000 compared to same period last year.
- Coriander September futures on NCDEX pared initial gains and inched down on Tuesday. While firm demand lend support, rise in arrivals in the spot market weighed on.
- Coriander exports from India were up 3% on year at 50,250 tn in the last financial year according to the Spices Board.
- Spices Board has forecast coriander production at 755,740 tn, up 25.9% on year due to a sharp rise in acreage.
- Govt. pegs 2019-20 coriander output at 762000 tonnes.
- According to Spices Board of India data, coriander exports were at 36750 tonnes during Apr-Dec 2019, up by one per cent compared to same period last year.
- Turmeric September futures on NCDEX ended up on Tuesday on improved demand.
- India exported 136,000 tn of turmeric in 2019-20, up 2% on year according to the Spices Board.
- Futures contract of turmeric expiring in April on National Commodity and Derivatives Exchange will be available for trade from Oct 1 now instead of Sep 1 earlier, the bourse said in a circular. Currently, futures contracts expiring in August, September, October and November are available for trading. The contract expiring in December will be available for trading from Monday and would continue to trade as per existing contract specifications.
- Spices Board pegs 2019-20 turmeric crop at 938,955 tn, dn 2.2% YoY
- For the period Apr-Dec 2019, India exported 101,500 tn of turmeric, marginally up compared to 101,000 tonnes exported during the same period in 2018. However, in the value terms it showed a three per cent fall.
- According to the Spices Board, exports of small cardamom fell 27% on year in terms of volume but rose 20% in value terms.
- Spices Board pegs '19-20 small cardamom crop at 11,230 tn, dn 13.2%



JEERA NCDEX SEP	May trade with a mild positive bias as long as the support at 14050 is held downside.	
DHANIYA NCDEX SEP	A movement inside 6540-6750 expected and a voluminous break out from the either the sides could lend fresh direction.	
TURMERIC NCDEX SEP	Pullbacks to 5880 or even more may not be ruled out as long as 5700 holds downside.	
CARDAMOM MCX SEP	A rise above 1400 or a fall past 1300 could set fresh direction.	

OILSEED COMPLEX

Market Buzz

- All commodities in the oilseed sector traded higher yesterday. MCX Aug CPO futures traded higher on back of improved demand from wholesalers in the spot market. Sep Soy oil futures also stayed positive on firm domestic demand.
- NCDEX Sep Soybean traded higher on improved demand at lower price levels from crushers. Sep Mustard seed prices traded higher on back of robust demand from crushers and millers in the spot market amid lower arrivals.
- The acreage under soybean across the country rose 6.8% on year to 11.9 mln ha as of 14th August, according to data from the farm ministry. The Union Cabinet approved a hike in minimum support price for 14 major kharif crops. MSP for soybean hiked by Rs.170 to 3880 from 3710 per 100 kg.
- Soymeal exports plunged 34.2% on year to 50,000 tn in July, according to SOPA. During Oct-Jul, India exported 608,000 tn soymeal as against 2.0 mln tn in the year-ago period.
- Crushing of mustard seeds by mills in the country surged 52.4% on year to 800,000 tn in July, according to Mustard Oil Producers Association of India.
- India's edible oil imports rose 13% on year to over 1.5 mln tn in July, according to SEA. For Nov-Jul, edible oil imports were at 9.6 mln tn, lower than 10.8 mln tn during the year-ago period. During July, there were no imports of RBD palmolein as compared with 264,718 tn a year ago. The imports of crude palm oil and crude palm kernel oil rose 50% on year in July. Imports of soybean and sunflower oil were also 52% and 4% higher on year, respectively, in July. As on Aug 1, 765,000 tn edible oil were at ports and 770,000 tn in the pipeline.
- The US Department of Agriculture has pegged global oilseed production in 2020-21 at 610.4 mln tn, compared with its estimate of 577.2 mln tn for 2019-20, and 604.2 mln tn estimated in July, the agency said in its report for August. They pegged global soybean output around 33.0 mln tn higher on year at 370.4 mln tn. For Brazil, soybean output is seen rising by 5.0 mln tn to 131.0 mln tn. Production of the oilseed in the US, is also seen rising by around 24.0 mln tn to 120.4 mln tn. In Argentina, soybean output is expected to be 3.8 mln tn higher at 53.5 mln tn.
- India's oilseed imports nearly doubled to 520,871 tn in 2019-20 (Apr-Mar), according to data from The Solvent Extractors' Association of India. During 2019-20, India imported 520,871 tn of oilseeds compared to 258,742 tn a year ago. Major oilseeds imports include soybean, sesame seed and cottonseed.
- India's mustard meal exports jumped 72% on year to 122,573 tn in June due to recovery in demand from major buyers, according to the data released by The Solvent Extractors' Association of India.
- Soybean Processors Association of India is expecting import of crude degummed soybean to hit a record high of 500,000 tn in July due to a recovery in demand with the easing of lockdown norms, the association's President Davish Jain said. India's soymeal exports fell nearly 17% on year to 60,000 tn in June and around 71% lower on year at 573,000 tn during Oct-Jun, according to SOPA.
- India's oilmeal exports rose marginally on year to 229,230 tn in June due to recovery in demand from major buyers, according to the data released by SEA. However, the overall export of oilmeals during Apr-Jun fell 15% on year at 579,110 tn, the data showed. In June, soymeal exports slumped 9.4% on year to 56,638 tn, the association said. During Apr-Jun, South Korea purchased 182,136 tn of oilmeals compared to 280,429 tn during same period last year, while Vietnam bought 120,666 tn of oilmeals against 106,898 tn. The US imported 45,308 tn of oilmeals compared to 50,605 tn a year ago, and Thailand purchased 65,188 tn of oilmeals against 74,338 tn a year ago from India.
- India's edible oil exports rose nearly 54% on year to 80,765 tn during 2019-20 (Apr-Mar), according to SEA. Last year, it sold 52,490 tn edible oil overseas. Export of groundnut oil was at 38,225 tn and most of it went to China. Mustard oil export was at 3,681 tn. The United Arab Emirates and the US buy most of India's mustard oil. Bhutan, US and Canada are the main buyers of soybean from India. In 2019-20, soybean exports were at 9,822 tn. India exported 12,520 tn rice bran oil mainly to the US, Japan, Malaysia and Thailand. Export of edible oils (both crude and refined) in Apr-Mar, in tn, compared with year-ago level.
- Mustard crop for 2019-20 (Jul-Jun) is pegged at 9.1 mln tn as against 9.3 mln tn produced a year ago, farm ministry data. Farmers across the country have sown mustard across 6.9 mln ha as of Thursday, down 0.4% on year, farm ministry data showed.
- According to Government 2nd advance estimate, castor production in 2019-20 is expected at 2.0 mln tn, up from the previous estimate of 1.7 mln tn. India's castor oil exports fell 6% on year to 38,199 tn in January, according to Solvent Extractors' Association of India's data. For Apr-Jan, exports were also down at 441,030 tn, compared with 472,192 tn during the year-ago period. In 2018-19 (Apr-Mar), India's castor oil exports slipped to 571,985 tn in 2018-19 from 651,326 tn in the previous year.
- Malaysia's crude palm oil output fell 4.1% on month to around 1.8 mln tn in July, according to Malaysian Palm Oil Board. Total palm oil stocks were down 10.6% at nearly 1.7 mln tn. Malaysia's palm oil exports in July rose 4.2% at around 1.8 mln tn, and its biodiesel exports jumped to 38,947 tn against 16,022 tn in June.
- Malaysia's palm oil exports in June were 25% higher at 1.71 mln tn, and its biodiesel exports fell 14.1% to 16,022 tn, the data showed.
- Malaysia's palm oil exports in July rose 5.8 per cent from June, cargo surveyor Intertek Testing Services said.


**SOYBEAN
NCDEX SEP**

Short covering rallies are likely to continue as long as prices stay above 3764 and expect more upside moves 3900 levels.


**REF SOY OIL
NCDEX SEP**

It is required to break the resistance of 875 for the bulls to re-strengthen further towards 880/884 levels.


**RMSEED
NCDEX SEP**

If prices sustain to trade above 5130 could see pull-backs to 5200/5220 levels.


**CASTOR
NCDEX SEP**

It is required to break the hurdle of 4030 with volume to extend upside moves further towards 4050/4080 levels.


**CPO MCX
AUG**

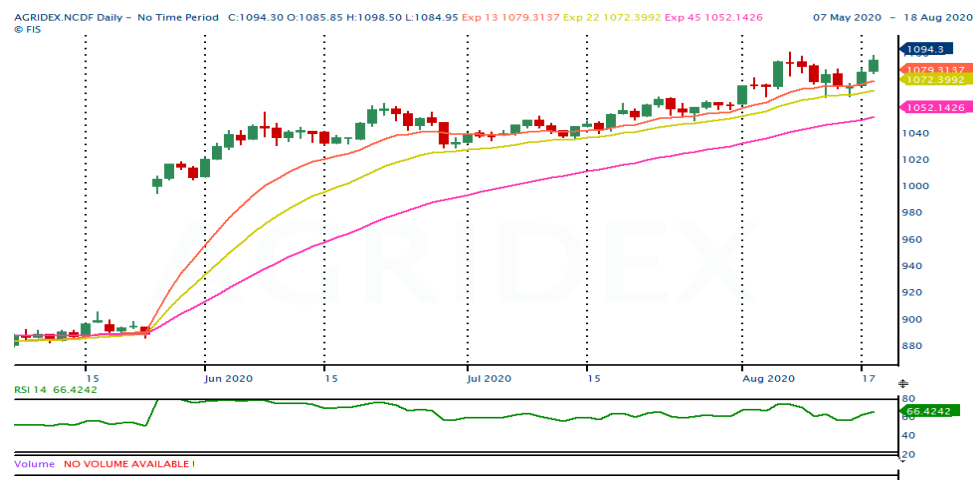
If prices sustain to trade above 751 expect to continue its upside moves targeting 755/760 levels.



COTTON COMPLEX

Market Buzz

- India's cotton exports are expected to touch 6.0 mln bales (1 bale = 170 kg) in the current marketing year 2019-20 (Oct-Sep) due to strong demand and lower domestic prices, which have made foreign sales economically viable, trade officials said.
- The US Department of Agriculture has scaled up its estimate for India's cotton output in 2020-21 (Aug-Jul) to 29.7 mln bales (1 US bale = 218 kg) from 28.5 mln bales projected the previous month. The agency, has lowered its estimate for India's cotton imports to 1.0 mln bales from 1.1 mln bales pegged a month ago. Exports are seen at 4.9 mln bales, as against 4.5 mln bales earlier. Consumption is seen at 22.5 mln bales, compared with the 23.0 mln bales estimated the previous month. As a result, the agency has raised its estimate for India's ending stocks for the year to 22.5 mln bales, as against 21.3 mln bales projected a month ago.
- The USDA has scaled up its global cotton output estimate for 2020-21 (Aug-Jul) to 117.5 mln bales from 116.3 mln bales projected the previous month. World production is 1.3 mln bales higher. Global cotton consumption is seen at 113.1 mln bales, as against the 114.3 mln bales projected in the previous month. Global exports for 2020-21 are seen at 41.6 mln bales, compared with 41.8 mln bales estimated a month ago. Ending stocks are seen at 104.9 mln bales, as against 102.8 mln bales. The agency has also scaled up its estimate for cotton output in the US to 18.1 mln bales from 17.5 mln bales projected last month.
- Farmers in India have sown cotton across 12.5 mln ha as of 14th August in the 2020-21 (Jul-Jun) season, up 3% on year. The area under the crop is almost in line with the normal area for the period, based on the average for the last five years, according to farm ministry data.
- The International Cotton Advisory Committee has scaled up its estimate for global consumption in 2020-21 (Aug-Jul) to 23.9 mln tn, compared with 23.3 mln tn projected in the previous month. They also revised upwards its estimate for global cotton exports for the ongoing season to 9.1 mln tn, compared with 8.6 mln tn projected in the previous month. Global production is seen at 24.8 mln tn, compared with 24.9 mln tn estimated in July. Ending stock is estimated at 22.9 mln tn against 24.0 mln tn projected a month ago.
- The UK-based Cotton Outlook has scaled down its estimate for global output of the fibre in 2020-21 (Aug-Jul) to 24.4 mln tn from 24.6 mln tn projected last month, the agency said in its July report. The fall in production estimate is primarily attributed to a smaller crop in the US and African Franc zone. Global cotton consumption in 2020-21 is pegged at 23.5 mln tn, marginally lower than 23.6 mln tn projected a month ago owing to changes for Brazil and the US. Ending stocks of the fibre for 2020-21 to 858,000 tn, against 998,000 tn projected last month.
- The Cotton Association of India has raised its estimates for carryover stocks in the country for 2019-20 (Oct-Sep) to 5.6 mln bales (1 bale = 170 kg), compared with 5.0 mln bales projected in the previous month. The cotton body has also revised upward its output estimate to 33.6 mln bales, against 33.0 mln bales estimated a month ago, the association said in its July release. Of the total 33.6-mln-bale crop estimate, around 32.7 mln bales have arrived till June. Estimate for exports and imports in the country for 2019-20 season is seen unchanged at 4.7 mln bales and 1.5 mln bales, respectively. Domestic consumption is expected to be 28.0 mln bales, unchanged from the previous month's estimate.
- The Cotton Corp of India has sold around 50,000 bales (1 bale = 170 kg) of the fibre from its procured stocks, said Pradeep Agarwal, chairman and managing director of the state-owned agency. Of the total quantity, most of the stock was sold in domestic market, while two deals have been signed with private mills in Bangladesh.
- The government has raised the support price of medium staple cotton by 260 rupees per 100 kg to 5,515 rupees, and that of long staple by 275 rupees to 5,825 rupees.
- Govt ups 2019-20 cotton output view to 36.05 mln bales vs 34.89 mln. USDA has pegged India's cotton acreage at 12.5 mln ha for the coming season, compared with 13.3 mln ha in 2019-20.



TECHNICAL VIEW

AGRIDEX NCDEX	Sustain to trade above 1090 expect pullbacks to 1100/1105 levels.	
KAPAS NCDEX APR21	Sentiments largely bullish and expect more upside moves targeting 1020/1028 levels, as long as prices holds the support of 1005 levels.	
COTTON MCX AUG	If prices sustain to trade above 16450 could see up-side momentum towards 16590/16700 levels.	
COCUDAKL NCDEX SEP	A choppy trading session is more expected for the day.	

OTHERS

Market Buzz

- Chana September futures on NCDEX ended up on Tuesday on firm demand amidst dip in supplies in the spot market.
- The government's scheme to offer free pulses during lockdown to migrant workers and public distribution system beneficiaries helped the National Agricultural Cooperative Marketing Federation of India clear 1.5 mln tn carryover chana from 2018-19 (Jul-Jun) stock, the agency's Additional Managing Director S.K. Singh said.
- The Madhya Pradesh government has wrapped up procurement of mustard, chana and masur harvested in 2019-20 (Jul-Jun), an official with state government said. The state-run and Centre's nodal agencies collectively procured 706,314 tn chana from 263,000 farmers in Madhya Pradesh in 2020-21 rabi marketing season starting April. Of the total purchased pulses, 704,922 tn was accepted while the rest rejected, the official said.
- The National Agricultural Cooperative Marketing Federation of India wrapped up chana procurement for 2020-21 (Apr-Mar) rabi marketing season by Jul 31, an official with the agency said. It procured 2.14 mln tn chana this year. Over 706,313 tn chana was procured from farmers in Madhya Pradesh, 128,000 tn in Andhra Pradesh, 102,000 tn in Karnataka, 615,666 tn in Rajasthan, 370,718 tn in Maharashtra, 123,766 tn in Gujarat, 48,000 tn in Telangana, 38,498 tn in Uttar Pradesh, and rest in Haryana, the official said.
- Guarseed and guar gum September futures on NCDEX stretched gains on Tuesday. Lower rainfall in the key guar growing regions in Rajasthan and expectation of rise in export demand lend support.
- According to the Rajasthan Agriculture Department, as of 24 July, guar has been sown across 1310100 hectares of land, up 43.7 per cent compared to the same period last year.
- The National Commodity & Derivatives Exchange will seek the Securities and Exchange Board of India's approval to launch options in goods contracts for chana, guar seed, guar gum and soybean, after it discontinued options trade in futures contracts, an exchange official said.
- Export of guar gum have improved in the month of May-20 by 81 percent compared to previous month. India exported around 17085 tonnes of guar gum at an average FoB of \$ 1360 per tonne in the month of May-20 compared to 9437 tonnes in April-20 at an average FoB of \$ 1599 per tonne. Of the total, 3008 tonnes have been exported to Russia. Exports are expected to increase in June-20 on improving crude and gradual increase in oilrigs overseas.
- Export of guar split have improved in the month of May-20. Exports in the month of May-20 are up by around 104% compared to previous month. India exported around 17642 tonnes of guar split in the month of May-20 at an average FoB of \$ 1740 per tonne compared to 8640 tonnes in April-20 at an average FoB of \$ 985 per tonne. Of the total quantity, around 2964 tonnes have been exported to US.
- The Association of Natural Rubber Producing Countries expects the global consumption of natural rubber to rise 2.6% on year in Aug-Oct on the back of stimulus measures the world over and improvement in economic activity in major consumers like the US and China.



TECHNICAL VIEW

CHANA NCDEX SEP	Profit booking towards 4330-4310 or even more to 4280 ranges may not be ruled out. Alternatively, sustained rise above 4425 may strengthen buying momentum.	
GUARSEED NCDEX SEP	A rise above 4220 accompanied by substantial volume is necessary for continuation of buying momentum. Corrective dips to 4090-4060 ranges may not be ruled out.	
GUARGUM NCDEX SEP	More upsides are in store and if the resistance of 6600 is breached convincingly, buying may continue. Inability to clear the same may call for profit booking.	
RUBBER ICEX SEP	Choppy moves inside 13500-13000 ranges expected and a breakout from either the sides could lend fresh directions.	

TECHNICAL LEVELS

Commodity	Contract	Open*	High*	Low*	Close*	S3	S2	S1	Pivot	R1	R2	R3
SPICES												
Jeera	SepNCDEX	14400	14405	14310	14385	14233	14272	14328	14367	14423	14462	14518
Turmeric	SepNCDEX	5808	5862	5800	5812	5725	5763	5787	5825	5849	5887	5911
Cardamom	SepMCX	1338	1338	1338	1338	1338	1338	1338	1338	1338	1338	1338
Dhaniya	SepNCDEX	6638	6700	6580	6598	6432	6506	6552	6626	6672	6746	6792
Menthaoil	AugMCX	987.0	1007.0	987.0	1002.2	970	979	990	999	1010	1019	1030
PULSES												
Chana	SepNCDEX	4345	4395	4345	4377	4300	4322	4350	4372	4400	4422	4450
Guarseed	SepNCDEX	4040	4172	4036	4133	3919	3978	4055	4114	4191	4250	4327
Guargum	SepNCDEX	6250	6510	6230	6437	5995	6112	6275	6392	6555	6672	6835
OIL & OIL SEEDS												
Soybean	SepNCDEX	3732	3790	3728	3768	3672	3700	3734	3762	3796	3824	3858
RM seed	SepNCDEX	5166	5198	5154	5166	5103	5129	5147	5173	5191	5217	5235
CPO	AugMCX	752.5	761.4	751.6	757.1	742	747	752	757	762	767	772
Soyoil	SepNCDEX	870.0	874.2	867.6	870.1	860	868	867	871	874	874	880
Castor seed	SepNCDEX	3990	4020	3980	3996	3937	3959	3977	3999	4017	4039	4057
CEREALS												
Wheat	SepNCDEX	1816	1816	1816	1816	1816	1816	1816	1816	1816	1816	1816
Barley	SepNCDEX	1371	1371	1371	1371	1371	1371	1371	1371	1371	1371	1371
OTHERS												
Cocud^	SepNCDEX	1906	1920	1893	1906	1866	1879	1893	1906	1920	1933	1947
Kapas	Apr21 NCDEX	1005.0	1015.0	1005.0	1012.0	996	1001	1006	1011	1016	1021	1026
Cotton	AugMCX	16430	16490	16360	16480	16267	16313	16397	16443	16527	16573	16657
Rubber	SepICEX	13078	13078	13078	13078	13078	13078	13078	13078	13078	13078	13078
Pivot Point: A predictive indicator of the market which is calculated as an average of significant prices from the performance of a market in the prior trading period. An open above the pivot point is generally considered bullish and vice versa. S1, S2 & S3 are supports and R1, R2, and R3 are resistances from where a turnaround can be anticipated. *Open, High, Low and Close prices of previous trading day / ^ Cottonseed Oil Cake												



Strong bias or bullish



Choppy or Sideways



Weak bias or bearish



Mild bullish bias



TRADING SIGNALS

Commodities	Intraday	Overall	Volatility		Short term		Medium term		Long term	
	View	View	1 day	Annualised	3 day EMA	5 day EMA	13 day EMA	22 day EMA	45 day EMA	60 day EMA
Pepper Sep ICEX	FLAT/CHOPPY	POSITIVE	0.54%	8.6%	FLAT	FLAT	POSITIVE	POSITIVE	POSITIVE	POSITIVE
Jeera Sep NCDEX	POSITIVE	HIGHLY POSITIVE	0.79%	12.5%	POSITIVE	POSITIVE	POSITIVE	POSITIVE	POSITIVE	POSITIVE
Turmeric Sep NCDEX	POSITIVE	POSITIVE	1.05%	16.7%	POSITIVE	POSITIVE	NEGATIVE	NEGATIVE	POSITIVE	POSITIVE
Cardamom Sep MCX	FLAT/CHOPPY	FLAT/CHOPPY	0.53%	8.5%	FLAT	FLAT	FLAT	FLAT	POSITIVE	NEGATIVE
Dhaniya Sep NCDEX	FLAT/CHOPPY	POSITIVE	1.30%	20.6%	NEGATIVE	POSITIVE	POSITIVE	POSITIVE	POSITIVE	POSITIVE
Chana Sep NCDEX	POSITIVE	HIGHLY POSITIVE	0.66%	10.4%	POSITIVE	POSITIVE	POSITIVE	POSITIVE	POSITIVE	POSITIVE
Guarseed10 Sep NCDEX	POSITIVE	HIGHLY POSITIVE	1.66%	26.3%	POSITIVE	POSITIVE	POSITIVE	POSITIVE	POSITIVE	POSITIVE
Guargum Sep NCDEX	POSITIVE	POSITIVE	2.33%	36.9%	POSITIVE	POSITIVE	NEGATIVE	POSITIVE	POSITIVE	POSITIVE
Soybean Sep NCDEX	POSITIVE	HIGHLY POSITIVE	0.91%	14.5%	POSITIVE	POSITIVE	POSITIVE	POSITIVE	POSITIVE	POSITIVE
Ref. Soyoil Sep NCDEX	NEGATIVE	POSITIVE	0.75%	11.9%	NEGATIVE	FLAT	NEGATIVE	POSITIVE	POSITIVE	POSITIVE
RMseed Sep NCDEX	POSITIVE	HIGHLY POSITIVE	0.86%	13.6%	POSITIVE	POSITIVE	POSITIVE	POSITIVE	POSITIVE	POSITIVE
CPO Aug MCX	POSITIVE	HIGHLY POSITIVE	1.08%	17.1%	POSITIVE	POSITIVE	POSITIVE	POSITIVE	POSITIVE	POSITIVE
Castor Sep NCDEX	POSITIVE	POSITIVE	0.52%	8.3%	POSITIVE	POSITIVE	POSITIVE	NEGATIVE	NEGATIVE	POSITIVE
Kapas21 Apr NCDEX	POSITIVE	HIGHLY POSITIVE	0.74%	11.8%	POSITIVE	POSITIVE	POSITIVE	POSITIVE	POSITIVE	POSITIVE
Cotton Aug MCX	POSITIVE	HIGHLY POSITIVE	0.60%	9.6%	POSITIVE	POSITIVE	POSITIVE	POSITIVE	POSITIVE	POSITIVE
Cocudakl Sep NCDEX	POSITIVE	POSITIVE	2.04%	32.4%	FLAT	POSITIVE	POSITIVE	POSITIVE	NEGATIVE	NEGATIVE
Wheat Sep NCDEX	FLAT/CHOPPY	NEGATIVE	0.51%	8.1%	POSITIVE	NEGATIVE	NEGATIVE	NEGATIVE	NEGATIVE	NEGATIVE
Barley Sep NCDEX	POSITIVE	NEGATIVE	0.66%	10.4%	FLAT	POSITIVE	NEGATIVE	NEGATIVE	NEGATIVE	NEGATIVE
Menthaoil Aug MCX	POSITIVE	HIGHLY POSITIVE	0.98%	15.6%	POSITIVE	POSITIVE	POSITIVE	POSITIVE	POSITIVE	POSITIVE
Rubber Sep ICEX	NEGATIVE	NEGATIVE	1.14%	18.1%	FLAT	NEGATIVE	NEGATIVE	NEGATIVE	POSITIVE	POSITIVE

Trading signals is prepared based on statistical analysis and is purely on technical indicators like exponential moving averages (EMAs), Relative strength Index (RSI) and stochastic, putting altogether provides an idea about intraday, short, medium and long term trend of the commodities. It also signals the risk of an investment in both agricultural and global commodities as well. Based on all listed indicators above, investors were able to fix a daily, near-term and long term trends. However, must be cautious especially for real-time intraday traders/jobbers.

Trading Strategy based on EMA

Trading strategies mentioned in the report is mainly based on 3, 5, 13, 22, 45 & 60 days exponential Moving Averages. 3 and 5 day EMA has taken for developing Intraday trading strategy, 13 days and 22 days EMA for Short term and Medium term, while 45,60 days EMA for Long term. Here, we use EMAs for POSITIVE and NEGATIVE signals. POSITIVE signal is formed when a short-term moving average (eg: 30 day) crosses from below a longer-term average (eg: 60 day), which is considered bullish. Likewise, NEGATIVE signal is formed when a short-term moving average (eg: 30 day) crosses from above a longer-term moving average (eg: 60 day), which is considered bearish.

Intraday and Overall view The section is consist of both Intraday and Overall view. The Intraday view is calculated by netting out of POSITIVES/NEGATIVES/FLAT signals formed in the short term trend. On the another part, Overall view is calculated by netting out number of POSITIVES/NEGATIVES/FLAT signals formed in the short, Medium and long term trend.

Volatility is a measure for dispersion of price of a financial instrument over a period of time by using Standard deviation and annualised actual volatility. Standard deviation is used to calculate one day volatility. Whereas, Annualized Actual Volatility (AAV) is measured as annualized standard deviation of the continuously compounded daily returns of the asset. Generally the thumb rule is that, higher the volatility higher the risk of the asset. See the table below the range risk ratings.

Annualised Volatility >	Risk %	Ratings	Risk %	Ratings	Risk %	Ratings	Risk %	Ratings	Risk %	Ratings
	> 35%	Very High risk	27 to 34%	High risk	20 to 26%	Moderate risk	11 to 19%	Low risk	1 to 10%	Very Low risk

GENERAL DISCLOSURES & DISCLAIMERS:

CERTIFICATION

We, Vinod T P, Hareesh V and Anu V Pai, employee of Geojit Financial Services Limited (GFSL), author of this report, hereby certify that all the views expressed in this research report (report) reflect my/ our personal views about any or all of the subject issuer or securities/ commodities.

DISCLAIMER

This report has been prepared by GFSL and the report & its contents are the exclusive property of GFSL and the recipient cannot tamper with the report or its contents in any manner and the said report, shall in no case, be further distributed to any third party for commercial use, with or without consideration.

GFSL has taken steps to ensure that facts in this report are based on reliable information but cannot testify, nor make any representation or warranty, express or implied, to the accuracy, contents or data contained within this report. It is hereby confirmed that wherever GFSL has employed a rating system in this report, the rating system has been clearly defined including the time horizon and benchmarks on which the rating is based.

Descriptions of any Commodity or Commodities mentioned herein are not intended to be complete and this report is not, and should not be construed as an offer or solicitation of an offer, to buy or sell any commodity or other financial instruments. GFSL has not taken any steps to ensure that the commodity/(ies) referred to in this report are suitable for any particular investor. This Report is not to be relied upon in substitution for the exercise of independent judgment. Opinions or estimates expressed are current opinions as of the original publication date appearing on this Report and the information, including the opinions and estimates contained herein, are subject to change without notice. GFSL is under no duty to update this report from time to time.

RISK DISCLOSURE

Geojit Financial Services Limited and/or its Affiliates and its officers, directors and employees including the analyst/authors shall not be in any way be responsible for any loss or damage that may arise to any person from any inadvertent error in the information contained in this report. Investors may lose his/her entire investment under certain market conditions so before acting on any advice or recommendation in these material, investors should consider whether it is suitable for their particular circumstances and, if necessary, seek professional advice. This report does not take into account the specific investment objectives, financial situation/circumstances and the particular needs of any specific person who may receive this document. The user assumes the entire risk of any use made of this information. Each recipient of this report should make such investigation as it deems necessary to arrive at an independent evaluation of an investment in the Commodity/(ies) referred to in this report (including the merits and risks involved). The price, volume and income of the investments referred to in this report may fluctuate and investors may realize losses that may exceed their original capital.

The investments or services contained or referred to in this report may not be suitable for all equally and it is recommended that an independent investment advisor be consulted. In addition, nothing in this report constitutes investment, legal, accounting or tax advice or a representation that any investment or strategy is suitable or appropriate to individual circumstances or otherwise constitutes a personal recommendation of GFSL.

REGULATORY DISCLOSURES:

Geojit Financial Services Limited's Associates consists of companies such as Geojit Technologies Private Limited (GTPL- Software Solutions provider), Geojit Credits Private Limited (GCPL- NBFC Services provider), Geojit Investment Services Limited (GISL- Corporate Agent for Insurance products), Geojit Financial Management Services Private Limited (GFMSL) & Geojit Financial Distribution Private Limited (GFDPL), (Distributors of Insurance and MF Units). In the context of the SEBI Regulations on Research Analysts (2014), Geojit Financial Services Limited affirms that we are a SEBI registered Research Entity and we issue research reports /research analysis etc that are prepared by our Research Analysts. We also affirm and undertake that no disciplinary action has been taken against us or our Analysts in connection with our business activities.

In compliance with the above mentioned SEBI Regulations, the following additional disclosures are also provided which may be considered by the reader before making an investment decision:

1. Disclosures regarding Ownership:

GFSL confirms that:

It/its associates have no financial interest or any other material conflict in relation to the subject Commodity futures covered herein at the time of publication of this report.

Further, the Research Analyst confirms that:

He, his associates and his relatives have no financial interest in the subject Commodity futures covered herein, and they have no other material conflict in the subject Commodity at the time of publication of this report.

2. Disclosures regarding Compensation:

During the past 12 months, GFSL or its Associates have not received any compensation or other benefits from any entity/ third party in connection with the Commodity futures mentioned in this report.

3. Disclosure regarding the Research Analyst's connection with the Commodity futures:

It is affirmed that we, Vinod T P, Hareesh V and Anu V Pai, employed as Research Analysts by GFSL and engaged in the preparation of this report have no substantial ownership or financial interest over any Commodity futures mentioned in the report.

4. Disclosure regarding Market Making activity:

Neither GFSL nor its Research Analysts have engaged in market making activities for the subject Commodity futures.

Copyright in this report vests exclusively with GFSL

Geojit Financial Services Ltd., 34/659-P, Civil Line Road, Padivattom, Kochi - 682024
Toll-Free Number: 1800-425-5501 / 1800-103-5501, Paid Number: 91 - 484 - 2901000
Research Entity SEBI Registration Number: INH200000345
Email id: customercare@geojit.com, Web: www.geojit.com

SEBI Stock Broker Registration No INZ000104737, Research Entity SEBI Reg No: INH200000345, Investment Adviser SEBI Reg No: INA200002817, Portfolio Manager: INP000003203, SEBI Registration No. Stock Broker: INZ000104737 / Depository Participant: IN-DP-325-2017, ARN Regn.Nos:0098, IRDA Corporate Agent (Composite) No.: CA0226.