



GEOJIT

PEOPLE YOU PROSPER WITH

AGRI PICKS

A Daily Report on Agricultural Commodities

Thursday, September 10, 2020

TODAY'S PICKS

AGRI BUZZ

- Rubber prices rose nearly 10% over the past three-four weeks and hit a record high of 140 rupees a kg due to pent-up demand after easing of the pandemic-induced lockdowns amid a supply crunch. The momentum is, however, unlikely to sustain.
- Arrivals of the soybean crop harvested in 2020-21 (Jul-Jun) have started in some markets of Madhya Pradesh, traders said. However, heavy rains have hit the quality of the crop from western parts of the state.
- India received 3.6 mm rainfall yesterday, 46% below normal, the India Meteorological Department said. Since Jun 1, the country has received 823.4 mm rainfall, 7% above normal, and during the week rainfall was 33.2 mm, 30% below normal.
- The Gujarat government has decided to procure groundnut harvested in 2020-21 (Jul-Jun) at the minimum support price from Nov 19, Minister for Consumer Affairs, Food & Civil Supplies in the state Jayesh Radadia said.
- The government aims to add 10 mln ha to the micro irrigation plan in five years to boost yield of crops, Farm Minister Narendra Singh Tomar said.
- Despite the government's push for natural farming, as little as 2% of the net sown area in the country is organically farmed, according to a study by the Centre for Science and Environment. The study, released by NITI Aayog Vice-Chairman Rajiv Kumar on Tuesday, noted that just 1.3% of the country's farmers are registered as practising organic farmers.

	Futures	Spot
Contract/spot	JEERA - SEP20	Unjha
Rate	13595	13800
% chg	-1.31	0
1 week low	13595	13800
1 week High	14095	13887.5
	Futures	Spot
Contract/spot	CHANA - SEP20	Bikaner
Rate	4852	4811.65
% chg	0.54	-0.32
1 week low	4806	4811.65
1 week High	5005	4940
	Futures	Spot
Contract/spot	SOYABEAN -	Indore
Rate	3794	3823
% chg	-0.26	-1.19
1 week low	3746	3819
1 week High	3980	3967
	Futures	Spot
Contract/spot	CASTOR SEED - SEP20	Deesa
Rate	4006	4089.3
% chg	0.6	0.27
1 week low	3970	4071.1
1 week High	4030	4095
	Futures	Spot
Contract/spot	RUBBER - SEP20	Kottayam
Rate	13700	13325
% chg	0.74	-0.63
1 week low	13325	0
1 week High	13500	0

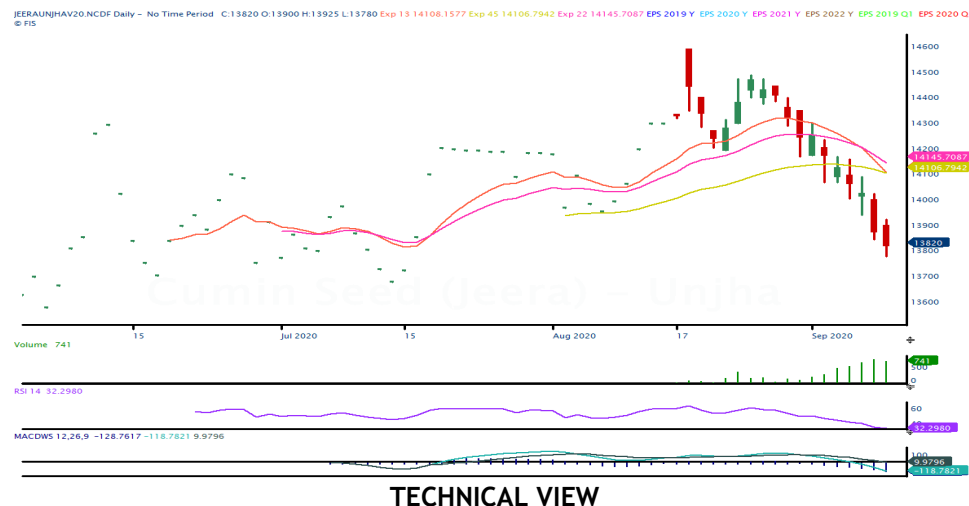
	Futures	Spot
Contract/spot	TURMERIC - SEP20	Nizamabad
Rate	5792	5525
% chg	1.22	-0.35
1 week low	5600	5495.25
1 week High	5960	5545.25
	Futures	Spot
Contract/spot	GUAR SEED10 - SEP20	Jodhpur
Rate	3940	3911.65
% chg	0.13	0.53
1 week low	3852	3888.35
1 week High	4015	3953.35
	Futures	Spot
Contract/spot	REFINED SOYA OIL -	Kandla
Rate	874.3	874.15
% chg	-0.26	-0.61
1 week low	870	874.15
1 week High	888.2	883.5
	Futures	Spot
Contract/spot	KAPAS - NOV20	Rajkot
Rate	974	953.25
% chg	-0.1	-1.26
1 week low	961.5	953.25
1 week High	975	967.05
	Futures	Spot
Contract/spot	MAIZE - Feed/Industrial Grade	Gulabgha
Rate	0	1331.5
% chg	0	0.87
1 week low	0	1301.75
1 week High	0	1332.1

	Futures	Spot
Contract/spot	CORIANDER - SEP20	Kota
Rate	6692	6800
% chg	-0.03	0.74
1 week low	6624	6721.9
1 week High	6840	6862.5
	Futures	Spot
Contract/spot	Guar Gum Refined	Jodhpur
Rate	5939	6041.65
% chg	0.32	0.07
1 week low	5873	6031.65
1 week High	6300	6279.15
	Futures	Spot
Contract/spot	RAPE MUSTARD SEEDS	Jaipur
Rate	5238	5433.9
% chg	-0.83	-0.3
1 week low	5211	5433.9
1 week High	5450	5512.5
	Futures	Spot
Contract/spot	COTTON SEED OIL CAKE AKOLA - SEP20	AKOLA
Rate	1666	1922.4
% chg	-2.97	-0.92
1 week low	1656	1920.2
1 week High	1820	1975.65
	Futures	Spot
Contract/spot	BARLEY - SEP20	Jaipur
Rate	1381.5	0
% chg	0.8	0
1 week low	1361	0
1 week High	1381.5	0

SPICES COMPLEX

Market Buzz

- Jeera October futures on NCDEX continued declining and hit its weakest level in two months on Wednesday. Subdued export demand weighed on.
- Exports of jeera were at 210,000 tn, up 16% from 180,300 tn in 2018-19 according to the Spices Board.
- According to the Spices Board, jeera production for the year 2019-20 is pegged at 540750 tonnes, down 21.8 per cent on yoy basis.
- According to the Spices Board, exports rose 27 per cent during Apr-Dec 2019 to 167000 compared to same period last year.
- Coriander October futures on NCDEX continued to move in thin ranges awaiting fresh cues for further directional moves. Firm demand along with steady arrivals in the spot market lend support.
- Coriander exports from India were up 3% on year at 50,250 tn in the last financial year according to the Spices Board.
- Spices Board has forecast coriander production at 755,740 tn, up 25.9% on year due to a sharp rise in acreage.
- According to Spices Board of India data, coriander exports were at 36750 tonnes during Apr-Dec 2019, up by one per cent compared to same period last year.
- Turmeric NCDEX October futures gained more than one per cent on Wednesday on short-covering. Improvement in demand lend support as well.
- Concerned over the fall in area under turmeric, the Parliamentary Standing Committee on Commerce has recommended the government to take immediate measures like implementing minimum support price to encourage farmers.
- India exported 136,000 tn of turmeric in 2019-20, up 2% on year according to the Spices Board.
- Futures contract of turmeric expiring in April on National Commodity and Derivatives Exchange will be available for trade from Oct 1 now instead of Sep 1 earlier, the bourse said in a circular. Currently, futures contracts expiring in August, September, October and November are available for trading. The contract expiring in December will be available for trading from Monday and would continue to trade as per existing contract specifications.
- Spices Board pegs 2019-20 turmeric crop at 938,955 tn, dn 2.2% YoY
- For the period Apr-Dec 2019, India exported 101,500 tn of turmeric, marginally up compared to 101,000 tonnes exported during the same period in 2018. However, in the value terms it showed a three per cent fall.
- According to the Spices Board, exports of small cardamom fell 27% on year in terms of volume but rose 20% in value terms.
- Spices Board pegs '19-20 small cardamom crop at 11,230 tn, dn 13.2%



JEERA NCDEX OCT	While there prevails weakness, brief bounce back to 13950-14100 ranges may not be ruled out before re-suming declining. However, an unexpected rise above 14250 may lessen the prevailing weakness.	
DHANIYA NCDEX OCT	May trade sideways to weak as long as 6950 is breached convincingly upside.	
TURMERIC NCDEX OCT	May inch up as long as support at 5780 holds downside. However, sustained trades below 5780 may lessen the mild positive bias and a direct fall below 5700 may intensify weakness.	
CARDAMOM MCX OCT	Mild positive bias.	

OILSEED COMPLEX

Market Buzz

- All commodities, except soybean in the edible oil complex declined yesterday. MCX Sep CPO settled lower on back of higher stocks in the spot markets along with weakness in BMD Malaysian palm oil futures. While, Oct Soy oil futures also continued to trade lower on higher domestic edible oil imports.
- NCDEX Oct Soybean prices trimmed previous day's losses on bargain buying at lower price levels. Oct Mustard seed futures prices also continued to trade lower on weak demand from traders and oil millers in the spot market.
- Crushing of mustard seeds by mills in the country surged 39% on year to 800,000 tn in August, data from the Mustard Oil Producers Association of India.
- Soybean output is estimated at 12.2 mln tn in 2019-20, according to the farm ministry's fourth advance estimate.
- Farmers have so far sown crops across 109.5 mln ha, up over 6% from a year ago, in 2020-21 (Jul-Jun) kharif season, the farm ministry's data showed. Farmers have sown soybean across 12.1 mln ha in the kharif season as of Thursday, up 7.0% from a year ago. The Union Cabinet approved a hike in minimum support price for 14 major kharif crops. MSP for soybean hiked by Rs.170 to 3880 from 3710 per 100 kg.
- Soymeal exports plunged 34.2% on year to 50,000 tn in July, according to SOPA. During Oct-Jul, India exported 608,000 tn soymeal as against 2.0 mln tn in the year-ago period.
- Crushing of mustard seeds by mills in the country surged 52.4% on year to 800,000 tn in July, according to Mustard Oil Producers Association of India.
- India's edible oil imports rose 13% on year to over 1.5 mln tn in July, according to SEA. For Nov-Jul, edible oil imports were at 9.6 mln tn, lower than 10.8 mln tn during the year-ago period. During July, there were no imports of RBD palmolein as compared with 264,718 tn a year ago. The imports of crude palm oil and crude palm kernel oil rose 50% on year in July. Imports of soyoil and sunflower oil were also 52% and 4% higher on year, respectively, in July. As on Aug 1, 765,000 tn edible oil were at ports and 770,000 tn in the pipeline.
- The US Department of Agriculture has pegged global oilseed production in 2020-21 at 610.4 mln tn, compared with its estimate of 577.2 mln tn for 2019-20, and 604.2 mln tn estimated in July, the agency said in its report for August. They pegged global soybean output around 33.0 mln tn higher on year at 370.4 mln tn. For Brazil, soybean output is seen rising by 5.0 mln tn to 131.0 mln tn. Production of the oilseed in the US, is also seen rising by around 24.0 mln tn to 120.4 mln tn. In Argentina, soybean output is expected to be 3.8 mln tn higher at 53.5 mln tn.
- India's oilseed imports nearly doubled to 520,871 tn in 2019-20 (Apr-Mar), according to data from The Solvent Extractors' Association of India. During 2019-20, India imported 520,871 tn of oilseeds compared to 258,742 tn a year ago. Major oilseeds imports include soybean, sesame seed and cottonseed.
- India's mustard meal exports jumped 72% on year to 122,573 tn in June due to recovery in demand from major buyers, according to the data released by The Solvent Extractors' Association of India.
- Soybean Processors Association of India is expecting import of crude degummed soyoil to hit a record high of 500,000 tn in July due to a recovery in demand with the easing of lockdown norms, the association's President Davish Jain said. India's soymeal exports fell nearly 17% on year to 60,000 tn in June and around 71% lower on year at 573,000 tn during Oct-Jun, according to SOPA.
- India's oilmeal exports rose marginally on year to 229,230 tn in June due to recovery in demand from major buyers, according to the data released by SEA. However, the overall export of oilmeals during Apr-Jun fell 15% on year at 579,110 tn, the data showed. In June, soymeal exports slumped 9.4% on year to 56,638 tn, the association said. During Apr-Jun, South Korea purchased 182,136 tn of oilmeals compared to 280,429 tn during same period last year, while Vietnam bought 120,666 tn of oilmeals against 106,898 tn. The US imported 45,308 tn of oilmeals compared to 50,605 tn a year ago, and Thailand purchased 65,188 tn of oilmeals against 74,338 tn a year ago from India.
- Mustard crop for 2019-20 (Jul-Jun) is pegged at 9.1 mln tn as against 8.7 mln tn produced a year ago, farm ministry data. Farmers across the country have sown mustard across 6.9 mln ha as of Thursday, down 0.4% on year, farm ministry data showed.
- According to Government final estimate, castor production in 2019-20 is lower by 15,000 tonnes compared to 2 million tones a year ago.
- India's castor oil exports rose 26.4% on year to 65,682 tn in July, according to Solvent Extractors' Association of India data. Exports were 51,962 tn in the year-ago period. For Apr-Jul, exports of the commodity were at 195,478 tn compared with 198,440 tn during the year-ago period. In 2019-20 (Apr-Mar), India's castor oil exports slipped to 539,962 tn from 571,985 tn in 2018-19, the association said.
- India's India July castor meal exports fell by 41% at 22,786 tn compared from 38,437 tn a yr ago. Overall exports also fell by 62% during Apr-July to 85,607 tones.
- Malaysia's crude palm oil output fell 4.1% on month to around 1.8 mln tn in July, according to Malaysian Palm Oil Board. Total palm oil stocks were down 10.6% at nearly 1.7 mln tn. Malaysia's palm oil exports in July rose 4.2% at around 1.8 mln tn, and its biodiesel exports jumped to 38,947 tn against 16,022 tn in June.
- Malaysia's palm oil exports were estimated to have fallen 15.1% on month to 1.47 mln tn in August, cargo surveyor AmSpec Agri Malaysia said.
- Malaysia's palm oil stock is expected to rise 6% on month to 1.8 mln tn in August due to higher output and lower exports, according to a CGS-CIMB Futures survey.

SYBEANINDR20.NCDF Daily - No Time Period C:3822 O:3780 H:3840 L:3752 Exp 13 3845 9514 Exp 45 3770 8724 Exp 22 3820 9821 EPS 2019 Y EPS 2020 Y EPS 2021 Y EPS 2022 Y EPS 2019 Q1 EPS 2020 Q1 EPS 2021 Q1
© FIS



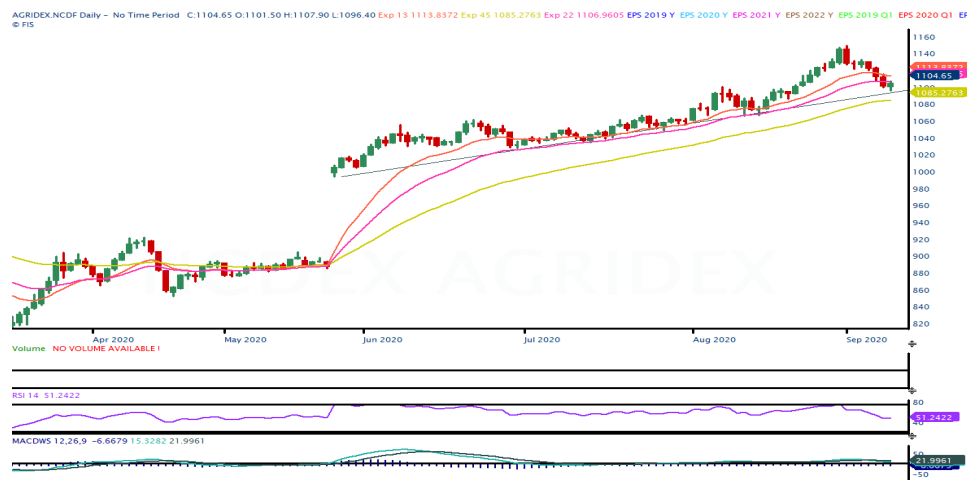
TECHNICAL VIEW

SOYBEAN NCDEX OCT	Recovery rally witnessed yesterday and any break above 3860 with volume could continue current covering moves targeting 3894/3920 levels.	
REF SOY OIL NCDEX OCT	If prices are able to break the resistance of 897 could see bullish moves. Otherwise, expect selloffs.	
RMSEED NCDEX OCT	Profit booking is more likely to continue further towards 5260/5240 levels.	
CASTOR NCDEX OCT	Expect sideways to negative trading session. Weakness seen below 4025 levels.	
CPO MCX SEP	If prices sustain to trade above 758 could see more upside moves targeting 770/773 levels.	





COTTON COMPLEX

Market Buzz

- All India cotton arrivals in spot markets were pegged at 5,100 bales (1 bale = 170 kg), compared with 5,200 bales on Tuesday, sources said. Arrivals in Gujarat and Maharashtra were pegged at 2,300 bales and 2,500 bales, respectively. Arrivals in Madhya Pradesh were estimated at 300 bales. There were no arrivals in other cotton-producing states such as Telangana, Andhra Pradesh, Haryana, Punjab, Rajasthan, Karnataka and Odisha.
- State Bank of India is going to launch a loan facility based on artificial intelligence and data analytics for organic cotton growers soon, Managing Director C.S. Setty said.
- Farmers have sown cotton across 12.9 mln ha in 2020-21 (Jul-Jun), up 3.2% on year, as of 4th Sep., data from the farm ministry showed. Area under the crop was slightly higher than the normal of 12.2 mln ha for the period, based on the average for the last five years. Sowing has almost come to an end in most states.
- Cotton production in Gujarat is likely to fall by 6% to 8.2 mln bales in 2020-21 (Jul-Jun) due to a sharp fall in acreage, according to the first advance estimates released by the state's farm department. Cotton acreage in Gujarat is down at 2.28 mln ha in the current season compared with 2.65 mln ha last year. The fall in sowing area is mainly due to the shift to other lucrative crops like groundnut.
- The International Cotton Advisory Committee has raised its 2020-21 (Aug-Jul) forecast for global prices due to a marginal rise in demand in its September report. Activity in major consuming countries began to recover with factories in Vietnam, Bangladesh and India reporting operations near 75% of capacity by July. The committee has scaled up its estimate for global consumption in 2020-21 to 24.3 mln tn, compared with 23.9 mln tn projected in the previous month. While global production is seen at 25.1 mln tn, compared with 24.8 mln tn estimated in August. Ending stock is estimated at 22.7 mln tn against 22.9 mln tn projected a month ago. The committee has also raised its estimate for global cotton exports for the ongoing season to 9.3 mln tn, compared with 9.1 mln tn projected in the previous month.
- The UK-based Cotton Outlook has scaled up its estimate for global output of the fibre in 2020-21 (Aug-Jul) to 24.6 mln tn from 24.4 mln tn projected last month, in its August report. Global cotton consumption in 2020-21 is seen steady at 23.5 mln tn. Ending stocks of the fibre for 2020-21 are seen at 1.08 mln tn, as against 858,000 tn projected last month.
- Govt cuts 2019-20 cotton output view to 35.5 mln bales vs 36.0 mln.
- Revenue of cotton yarn spinners is expected to decline 30-35% in 2020-21 (Apr-Mar) due to tepid domestic and export demand because of disruptions caused by COVID-19, research agency CRISIL said in a report.
- The Cotton Association of India has raised its estimates for exports for 2019-20 (Oct-Sep) to 5.0 mln bales (1 bale = 170 kg), from 4.7 mln bales projected in the previous month. Around 4.3 mln bales are estimated to have been shipped by end of July and shipment of further 700,000 bales is estimated to take place during August and September. The association has also revised upward its output estimate to 35.5 mln bales, against 33.6 mln bales estimated a month ago. Carryover stocks in the country for 2019-20 season are seen at 10.3 mln bales, higher from 5.6 mln bales projected in the previous month. Estimates for imports are seen at 1.6 mln bales, against 1.5 mln bales in the previous month. Domestic consumption is expected to be 25.0 mln bales, lower from 28.0 mln bales projected in the previous month.
- India's cotton exports are expected to touch 6.0 mln bales (1 bale = 170 kg) in the current marketing year 2019-20 (Oct-Sep) due to strong demand and lower domestic prices, which have made foreign sales economically viable, trade officials said.
- The US Department of Agriculture has scaled up its estimate for India's cotton output in 2020-21 (Aug-Jul) to 29.7 mln bales (1 US bale = 218 kg) from 28.5 mln bales projected the previous month. The agency, has lowered its estimate for India's cotton imports to 1.0 mln bales from 1.1 mln bales pegged a month ago. Exports are seen at 4.9 mln bales, as against 4.5 mln bales earlier. Consumption is seen at 22.5 mln bales, compared with the 23.0 mln bales estimated the previous month. As a result, the agency has raised its estimate for India's ending stocks for the year to 22.5 mln bales, as against 21.3 mln bales projected a month ago.
- The USDA has scaled up its global cotton output estimate for 2020-21 (Aug-Jul) to 117.5 mln bales from 116.3 mln bales projected the previous month. World production is 1.3 mln bales higher. Global cotton consumption is seen at 113.1 mln bales, as against the 114.3 mln bales projected in the previous month. Global exports for 2020-21 are seen at 41.6 mln bales, compared with 41.8 mln bales estimated a month ago. Ending stocks are seen at 104.9 mln bales, as against 102.8 mln bales. The agency has also scaled up its estimate for cotton output in the US to 18.1 mln bales from 17.5 mln bales projected last month.
- The government has raised the support price of medium staple cotton by 260 rupees per 100 kg to 5,515 rupees, and that of long staple by 275 rupees to 5,825 rupees.



TECHNICAL VIEW

<p>AGRIDEX NCDEX</p>	<p>As prices unable to break the support of 1100 levels, except pullbacks to 1116/1120 levels. Major upside moves could trigger once it bounce above 1125 regions.</p>	
<p>KAPAS NCDEX APR21</p>	<p>Though short covering rallies being witnessed yesterday, inability to move above 1120 could see further selloffs towards 1005/1000 levels for the day.</p>	
<p>COTTON MCX OCT</p>	<p>While prices stays below 17650 expect a lower corrective moves targeting 17300/17200 levels.</p>	
<p>COCUDAKL NCDEX DEC</p>	<p>Tough short covering rallies witnessed yesterday, while prices stays below 1830 expect a downfall towards 1760/1730 levels in the near term.</p>	

OTHERS





Market Buzz

- Chana October futures on NCDEX inched up on Wednesday on rise in demand amidst limited supplies.
- The government's scheme to offer free pulses during lockdown to migrant workers and public distribution system beneficiaries helped the National Agricultural Cooperative Marketing Federation of India clear 1.5 mln tn carryover chana from 2018-19 (Jul-Jun) stock, the agency's Additional Managing Director S.K. Singh said.
- The Madhya Pradesh government has wrapped up procurement of mustard, chana and masur harvested in 2019-20 (Jul-Jun), an official with state government said. The state-run and Centre's nodal agencies collectively procured 706,314 tn chana from 263,000 farmers in Madhya Pradesh in 2020-21 rabi marketing season starting April. Of the total purchased pulses, 704,922 tn was accepted while the rest rejected, the official said.
- The National Agricultural Cooperative Marketing Federation of India wrapped up chana procurement for 2020-21 (Apr-Mar) rabi marketing season by Jul 31, an official with the agency said. It procured 2.14 mln tn chana this year. Over 706,313 tn chana was procured from farmers in Madhya Pradesh, 128,000 tn in Andhra Pradesh, 102,000 tn in Karnataka, 615,666 tn in Rajasthan, 370,718 tn in Maharashtra, 123,766 tn in Gujarat, 48,000 tn in Telangana, 38,498 tn in Uttar Pradesh, and rest in Haryana, the official said.
- Guar complex on NCDEX inched up on Wednesday, taking a breather from the recent declines. A bounce back in crude oil prices lend support.
- According to the Rajasthan Agriculture Department, as of 20 Aug, guar has been sown across 2384700 hectares of land, up 79.5 per cent compared to the same period last year.
- Export of guar gum have fell in the month of Jun-20 by 16 percent compared to previous month. India exported around 14358 tonnes of guar gum at an average FoB of \$ 1742 per tonne in the month of Jun-20 compared to 17085 tonnes in May-20 at an average FoB of \$ 1360 per tonne. Of the total 2206 tonnes have been exported to Russia.
- Export of guar split have fell in the month of Jun-20. Exports in the month of Jun-20 are down by around 87% compared to previous month. India exported around 2240 tonnes of guar split in the month of Jun-20 at an average FoB of \$ 916 per tonne compared to 17642 tonnes in May-20 at an average FoB of \$ 1740 per tonne. Of the total quantity, around 2120 tonnes have been exported to China and 120 tonnes to US.
- The Association of Natural Rubber Producing Countries expects the global consumption of natural rubber to rise 2.6% on year in Aug-Oct on the back of stimulus measures the world over and improvement in economic activity in major consumers like the US and China.

CHANA20.NCDEX(AutoZoomed) Daily - No Time Period C:4872 O:4837 H:4895 L:4820 Exp 13 4787.6895 Exp 45 4512.3080 Exp 22 4674.1505 EPS 2019 Y EPS 2020 Y EPS 2021 Y EPS 2022 Y EPS 2019 Q1 EPS 2020 Q1 © FIS



TECHNICAL VIEW

<p>CHANA NCDEX OCT</p>	<p>Choppy moves inside 4900-4800 expected and a voluminous breakout from either the sides may call for fresh directions for the day.</p>	
<p>GUARSEED NCDEX OCT</p>	<p>A rise above 3950 or a fall past 3850 accompanied by substantial volume may lend fresh directions for the day.</p>	
<p>GUARGUM NCDEX OCT</p>	<p>As long as the support at 5950 is held downside choppy trades with a tendency for a brief pullbacks seems to be likely. Sustained trades below 5950 may increase selling pressure.</p>	
<p>RUBBER ICEX OCT</p>	<p>13800 is the immediate resistance, which if breached convincingly may call for more upsides. Else, expect profit booking.</p>	

TECHNICAL LEVELS

Commodity	Contract	Open*	High*	Low*	Close*	S3	S2	S1	Pivot	R1	R2	R3
SPICES												
Jeera	OctNCDEX	13900	13925	13780	13820	13613	13697	13758	13842	13903	13987	14048
Turmeric	OctNCDEX	5824	5888	5824	5874	5772	5798	5836	5862	5900	5926	5964
Cardamom	OctMCX	1700	1700	1700	1700	1700	1700	1700	1700	1700	1700	1700
Dhaniya	OctNCDEX	6748	6840	6658	6762	6485	6571	6667	6753	6849	6935	7031
Menthaoil	SepMCX	947.2	956.3	946.0	953.2	937	942	947	952	958	962	968
PULSES												
Chana	OctNCDEX	4837	4895	4820	4872	4755	4787	4830	4862	4905	4937	4980
Guarseed	OctNCDEX	3876	3933	3875	3915	3824	3850	3882	3908	3940	3966	3998
Guargum	OctNCDEX	5982	6065	5950	6024	5846	5898	5961	6013	6076	6128	6191
OIL & OIL SEEDS												
Soybean	OctNCDEX	3780	3840	3752	3822	3681	3717	3769	3805	3857	3893	3945
RM seed	OctNCDEX	5331	5335	5264	5290	5187	5225	5258	5296	5329	5367	5400
CPO	SepMCX	766.4	766.7	761.1	762.9	755	758	760	764	766	769	772
Soyoil	OctNCDEX	883.4	885.2	878.0	881.6	871	878	878	882	885	885	892
Castor seed	OctNCDEX	4020	4054	4020	4036	3985	4003	4019	4037	4053	4071	4087
CEREALS												
Wheat	OctNCDEX	1769	1769	1769	1769	1769	1769	1769	1769	1769	1769	1769
Barley	OctNCDEX	1401	1401	1401	1401	1401	1401	1401	1401	1401	1401	1401
OTHERS												
Cocud^	DecNCDEX	1780	1818	1766	1806	1723	1745	1775	1797	1827	1849	1879
Kapas	Apr21 NCDEX	1007.5	1015.0	1007.0	1013.5	1001	1004	1009	1012	1017	1020	1025
Cotton	OctMCX	17460	17520	17420	17440	17300	17360	17400	17460	17500	17560	17600
Rubber	OctICEX	13567	13567	13567	13567	13567	13567	13567	13567	13567	13567	13567

Pivot Point: A predictive indicator of the market which is calculated as an average of significant prices from the performance of a market in the prior trading period.
 An open above the pivot point is generally considered bullish and vice versa.
 S1, S2 & S3 are supports and R1, R2, and R3 are resistances from where a turnaround can be anticipated.
 *Open, High, Low and Close prices of previous trading day / ^ Cottonseed Oil Cake



Strong bias or bullish



Choppy or Sideways



Weak bias or bearish



Mild bullish bias



Mild bearish bias

TRADING SIGNALS

Commodities	Intraday	Overall	Volatility		Short term		Medium term		Long term	
	View	View	1 day	Annualised	3 day EMA	5 day EMA	13 day EMA	22 day EMA	45 day EMA	60 day EMA
Pepper Oct ICEX	FLAT/CHOPPY	FLAT/CHOPPY	#N/A	#N/A	FLAT	FLAT	FLAT	#N/A	#N/A	#N/A
Jeera Oct NCDEX	NEGATIVE	HIGHLY NEGATIVE	0.62%	9.8%	NEGATIVE	NEGATIVE	NEGATIVE	NEGATIVE	NEGATIVE	NEGATIVE
Turmeric Oct NCDEX	POSITIVE	NEGATIVE	1.21%	19.2%	POSITIVE	POSITIVE	NEGATIVE	NEGATIVE	NEGATIVE	NEGATIVE
Cardamom Oct MCX	FLAT/CHOPPY	POSITIVE	3.37%	53.4%	FLAT	FLAT	FLAT	POSITIVE	POSITIVE	POSITIVE
Dhaniya Oct NCDEX	FLAT/CHOPPY	FLAT/CHOPPY	0.92%	14.7%	POSITIVE	NEGATIVE	NEGATIVE	NEGATIVE	POSITIVE	POSITIVE
Chana Oct NCDEX	FLAT/CHOPPY	POSITIVE	0.94%	15.0%	POSITIVE	NEGATIVE	POSITIVE	POSITIVE	POSITIVE	POSITIVE
Guarseed10 Oct NCDEX	FLAT/CHOPPY	NEGATIVE	1.54%	24.4%	POSITIVE	NEGATIVE	NEGATIVE	NEGATIVE	NEGATIVE	POSITIVE
Guargum Oct NCDEX	FLAT/CHOPPY	NEGATIVE	2.32%	36.8%	POSITIVE	NEGATIVE	NEGATIVE	NEGATIVE	NEGATIVE	NEGATIVE
Soybean Oct NCDEX	POSITIVE	POSITIVE	1.24%	19.7%	POSITIVE	POSITIVE	NEGATIVE	POSITIVE	POSITIVE	POSITIVE
Ref. Soyoil Oct NCDEX	NEGATIVE	NEGATIVE	0.88%	14.0%	NEGATIVE	NEGATIVE	NEGATIVE	NEGATIVE	POSITIVE	POSITIVE
RMseed Oct NCDEX	NEGATIVE	FLAT/CHOPPY	1.13%	17.9%	NEGATIVE	NEGATIVE	NEGATIVE	POSITIVE	POSITIVE	POSITIVE
CPO Sep MCX	NEGATIVE	FLAT/CHOPPY	1.02%	16.2%	NEGATIVE	NEGATIVE	NEGATIVE	POSITIVE	POSITIVE	POSITIVE
Castor Oct NCDEX	POSITIVE	NEGATIVE	0.65%	10.4%	POSITIVE	POSITIVE	NEGATIVE	NEGATIVE	NEGATIVE	NEGATIVE
Kapas21 Apr NCDEX	FLAT/CHOPPY	FLAT/CHOPPY	0.38%	6.0%	POSITIVE	NEGATIVE	NEGATIVE	NEGATIVE	POSITIVE	POSITIVE
Cotton Oct MCX	NEGATIVE	NEGATIVE	0.77%	12.3%	NEGATIVE	NEGATIVE	NEGATIVE	NEGATIVE	POSITIVE	POSITIVE
Cocudakl Dec NCDEX	POSITIVE	NEGATIVE	1.86%	29.5%	POSITIVE	POSITIVE	NEGATIVE	NEGATIVE	NEGATIVE	NEGATIVE
Wheat Oct NCDEX	NEGATIVE	NEGATIVE	0.47%	7.5%	NEGATIVE	NEGATIVE	NEGATIVE	NEGATIVE	POSITIVE	POSITIVE
Barley Oct NCDEX	FLAT/CHOPPY	NEGATIVE	0.73%	11.7%	FLAT	FLAT	NEGATIVE	POSITIVE	NEGATIVE	NEGATIVE
Menthaoil Sep MCX	POSITIVE	NEGATIVE	1.07%	17.0%	POSITIVE	POSITIVE	NEGATIVE	NEGATIVE	NEGATIVE	NEGATIVE
Rubber Oct ICEX	FLAT/CHOPPY	POSITIVE	0.63%	10.0%	FLAT	FLAT	POSITIVE	POSITIVE	POSITIVE	POSITIVE

Trading signals is prepared based on statistical analysis and is purely on technical indicators like exponential moving averages (EMAs), Relative strength Index (RSI) and stochastic, putting altogether provides an idea about intraday, short, medium and long term trend of the commodities. It also signals the risk of an investment in both agricultural and global commodities as well. Based on all listed indicators above, investors were able to fix a daily, near-term and long term trends. However, must be cautious especially for real-time intraday traders/jobbers.

Trading Strategy based on EMA

Trading strategies mentioned in the report is mainly based on 3, 5, 13, 22, 45 & 60 days exponential Moving Averages. 3 and 5 day EMA has taken for developing Intraday trading strategy, 13 days and 22 days EMA for Short term and Medium term, while 45,60 days EMA for Long term. Here, we use EMAs for POSITIVE and NEGATIVE signals. POSITIVE signal is formed when a short-term moving average (eg: 30 day) crosses from below a longer-term average (eg: 60 day), which is considered bullish. Likewise, NEGATIVE signal is formed when a short-term moving average (eg: 30 day) crosses from above a longer-term moving average (eg: 60 day), which is considered bearish.

Intraday and Overall view The section is consist of both Intraday and Overall view. The Intraday view is calculated by netting out of POSITIVES/NEGATIVES/FLAT signals formed in the short term trend. On the another part, Overall view is calculated by netting out number of POSITIVES/NEGATIVES/FLAT signals formed in the short, Medium and long term trend.

Volatility is a measure for dispersion of price of a financial instrument over a period of time by using Standard deviation and annualised actual volatility. Standard deviation is used to to calculate one day volatility. Whereas, Annualized Actual Volatility (AAV) is measured as annualized standard deviation of the continuously compounded daily returns of the asset. Generally the thumb rule is that, higher the volatility higher the risk of the asset. See the table below the range risk ratings.

Annualised Volatility >	Risk %	Ratings	Risk %	Ratings	Risk %	Ratings	Risk %	Ratings	Risk %	Ratings
> 35%	> 35%	Very High risk	27 to 34%	High risk	20 to 26%	Moderate risk	11 to 19%	Low risk	1 to 10%	Very Low risk

GENERAL DISCLOSURES & DISCLAIMERS:

CERTIFICATION,

We, Vinod T P, Hareesh V and Anu V Pai, employee of Geojit Financial Services Limited (GFSL), author of this report, hereby certify that all the views expressed in this research report (report) reflect my/ our personal views about any or all of the subject issuer or securities/ commodities.

DISCLAIMER

This report has been prepared by GFSL and the report & its contents are the exclusive property of GFSL and the recipient cannot tamper with the report or its contents in any manner and the said report, shall in no case, be further distributed to any third party for commercial use, with or without consideration.

GFSL has taken steps to ensure that facts in this report are based on reliable information but cannot testify, nor make any representation or warranty, express or implied, to the accuracy, contents or data contained within this report. It is hereby confirmed that wherever GFSL has employed a rating system in this report, the rating system has been clearly defined including the time horizon and benchmarks on which the rating is based.

Descriptions of any Commodity or Commodities mentioned herein are not intended to be complete and this report is not, and should not be construed as an offer or solicitation of an offer, to buy or sell any commodity or other financial instruments. GFSL has not taken any steps to ensure that the commodity/(ies) referred to in this report are suitable for any particular investor. This Report is not to be relied upon in substitution for the exercise of independent judgment. Opinions or estimates expressed are current opinions as of the original publication date appearing on this Report and the information, including the opinions and estimates contained herein, are subject to change without notice. GFSL is under no duty to update this report from time to time.

RISK DISCLOSURE

Geojit Financial Services Limited and/or its Affiliates and its officers, directors and employees including the analyst/authors shall not be in any way be responsible for any loss or damage that may arise to any person from any inadvertent error in the information contained in this report. Investors may lose his/her entire investment under certain market conditions so before acting on any advice or recommendation in these material, investors should consider whether it is suitable for their particular circumstances and, if necessary, seek professional advice. This report does not take into account the specific investment objectives, financial situation/circumstances and the particular needs of any specific person who may receive this document. The user assumes the entire risk of any use made of this information. Each recipient of this report should make such investigation as it deems necessary to arrive at an independent evaluation of an investment in the Commodity/(ies) referred to in this report (including the merits and risks involved). The price, volume and income of the investments referred to in this report may fluctuate and investors may realize losses that may exceed their original capital.

The investments or services contained or referred to in this report may not be suitable for all equally and it is recommended that an independent investment advisor be consulted. In addition, nothing in this report constitutes investment, legal, accounting or tax advice or a representation that any investment or strategy is suitable or appropriate to individual circumstances or otherwise constitutes a personal recommendation of GFSL.

REGULATORY DISCLOSURES:

Geojit Financial Services Limited's Associates consists of companies such as Geojit Technologies Private Limited (GTPL- Software Solutions provider), Geojit Credits Private Limited (GCPL- NBFC Services provider), Geojit Investment Services Limited (GISL- Corporate Agent for Insurance products), Geojit Financial Management Services Private Limited (GFMSL) & Geojit Financial Distribution Private Limited (GFDPL), (Distributors of Insurance and MF Units). In the context of the SEBI Regulations on Research Analysts (2014), Geojit Financial Services Limited affirms that we are a SEBI registered Research Entity and we issue research reports /research analysis etc that are prepared by our Research Analysts. We also affirm and undertake that no disciplinary action has been taken against us or our Analysts in connection with our business activities.

In compliance with the above mentioned SEBI Regulations, the following additional disclosures are also provided which may be considered by the reader before making an investment decision:

1. Disclosures regarding Ownership:

GFSL confirms that:

It/its associates have no financial interest or any other material conflict in relation to the subject Commodity futures covered herein at the time of publication of this report.

Further, the Research Analyst confirms that:

He, his associates and his relatives have no financial interest in the subject Commodity futures covered herein, and they have no other material conflict in the subject Commodity at the time of publication of this report.

2. Disclosures regarding Compensation:

During the past 12 months, GFSL or its Associates have not received any compensation or other benefits from any entity/ third party in connection with the Commodity futures mentioned in this report.

3. Disclosure regarding the Research Analyst's connection with the Commodity futures:

It is affirmed that we, Vinod T P, Hareesh V and Anu V Pai, employed as Research Analysts by GFSL and engaged in the preparation of this report have no substantial ownership or financial interest over any Commodity futures mentioned in the report.

4. Disclosure regarding Market Making activity:

Neither GFSL nor its Research Analysts have engaged in market making activities for the subject Commodity futures.

Copyright in this report vests exclusively with GFSL

Geojit Financial Services Ltd., 34/659-P, Civil Line Road, Padivattom, Kochi - 682024
 Toll-Free Number: 1800-425-5501 / 1800-103-5501, Paid Number: 91 - 484 - 2901000
 Research Entity SEBI Registration Number: INH200000345
 Email id: customercare@geojit.com, Web: www.geojit.com

SEBI Stock Broker Registration No INZ000104737, Research Entity SEBI Reg No: INH200000345, Investment Adviser SEBI Reg No: INA200002817, Portfolio Manager: INP000003203, SEBI Registration No. Stock Broker: INZ000104737 / Depository Participant: IN-DP-325-2017, ARN Regn.Nos:0098, IRDA Corporate Agent (Composite) No.: CA0226.