



**GEOJIT**

PEOPLE YOU PROSPER WITH

# AGRI PICKS

*A Daily Report on Agricultural Commodities*

Monday, December 28, 2020

## TODAY'S PICKS

### AGRI BUZZ

- Indian traders are likely to export around 50,000 tn of maize to Bangladesh under deals signed last month, market participants said. The exports will take place at Visakhapatnam in the next few days at \$190-\$200 per tn free on board.
- The National Agricultural Cooperative Marketing Federation of India has purchased around 9,118 tn of key pulses harvested in the 2020-21 (Jul-Jun) kharif season in Tamil Nadu, Maharashtra, Rajasthan and Haryana as of Monday, an official with the agency said.
- The Multi Commodity Exchange of India will launch futures contracts of rubber for January, February, March and April today.
- The Centre is willing to talk to protesting farmers over their reservations against the three farm laws and clear the air over the Acts, Vivek Agarwal, joint secretary of farm department, said in a letter to farmers.
- The government has so far bought 43.6 mln tn paddy in the 2020-21 (Oct-Sep) kharif marketing season, up nearly 24% on year, it said in a release. Paddy is India's largest-grown kharif crop.
- Water level in 123 key reservoirs was at 74% of the total storage capacity, according to Central Water Commission data. The level was 8% lower on year at 127.728 bcm as of today. However, it was 19% higher than the average of the past 10 years.

	Futures	Spot
Contract/spot	JEERA - JAN21	Unjha
Rate	12960	13353.35
% chg	0.23	-0.15
1 week low	12830	13353.35
1 week High	13060	13405
	Futures	Spot
Contract/spot	CHANA - JAN21	Bikaner
Rate	4410	4400
% chg	-2.84	-3.38
1 week low	4365	4400
1 week High	4601	4554
	Futures	Spot
Contract/spot	SOYABEAN - JAN21	Indore
Rate	4487	4545
% chg	-0.09	0.93
1 week low	4357	4468
1 week High	4560	4545
	Futures	Spot
Contract/spot	CASTOR SEED - JAN21	Deesa
Rate	4448	4468.2
% chg	1.69	0.08
1 week low	4286	4425
1 week High	4448	4468.2
	Futures	Spot
Contract/spot	RUBBER - JAN21	Kottayam
Rate	15900	15600
% chg	0.63	0
1 week low	15600	0
1 week High	15775	0

	Futures	Spot
Contract/spot	TURMERIC	Nizamabad
Rate	5700	5521.9
% chg	0.04	0.17
1 week low	5650	5512.5
1 week High	5700	5521.9
	Futures	Spot
Contract/spot	GUAR SEED10 - JAN21	Jodhpur
Rate	3905	3900
% chg	0.13	0
1 week low	3842	3858.75
1 week High	3944	3900
	Futures	Spot
Contract/spot	REFINDED SOYA OIL - JAN21	Kandla
Rate	1146.2	1139.6
% chg	0.03	1.59
1 week low	1107	1102
1 week High	1159.5	1140
	Futures	Spot
Contract/spot	KAPAS - FEB21	Rajkot
Rate	1094	1087.1
% chg	0.32	0.02
1 week low	1090.5	1083.15
1 week High	1095.5	1091.05
	Futures	Spot
Contract/spot	MAIZE - Feed/Industrial	Gulabbagh
Rate	0	1426.9
% chg	0	-0.26
1 week low	0	1426.9
1 week High	0	1431.9

	Futures	Spot
Contract/spot	CORIANDER - JAN21	Kota
Rate	5898	6085.4
% chg	-0.24	-1.11
1 week low	5764	6085.4
1 week High	5946	6156.5
	Futures	Spot
Contract/spot	Guar Gum Refined Splits - JAN21	Jodhpur
Rate	5967	6000
% chg	-0.3	-0.62
1 week low	5885	5950
1 week High	6058	6037.5
	Futures	Spot
Contract/spot	RAPE MUSTARD SEEDS - JAN21	Jaipur
Rate	5660	5914.15
% chg	0.52	1.1
1 week low	5494	5787.5
1 week High	5690	5914.15
	Futures	Spot
Contract/spot	COTTON SEED OIL CAKE AKOLA - JAN21	AKOLA
Rate	1996	2013.35
% chg	-1.19	-0.33
1 week low	1925	2000
1 week High	2031	2020
	Futures	Spot
Contract/spot	BARLEY - JAN21	Jaipur
Rate	1456.5	0
% chg	-0.24	0
1 week low	1455.5	0
1 week High	1460	0





SPICES COMPLEX

Market Buzz

- Jeera January futures on NCDEX ended up on Thursday on bargain buying. However, rise in acreage in the key jeera producing state of Gujarat kept gains under check.
- As per reports, farmers have sown jeera across 453704 hectares as of Dec 14 in Gujarat compared to the season normal of 406141 hectares.
- Spices Board pegs Apr-Sep jeera exports at 153000 tonnes, up by 33 per cent on yoy basis.
- Exports of jeera were at 210,000 tn, up 16% from 180,300 tn in 2018-19 according to the Spices Board.
- According to the Spices Board, jeera production for the year 2019-20 is pegged at 540750 tonnes, down 21.8 per cent on yoy basis.
- Coriander January futures on NCDEX ended down on Thursday on tepid demand.
- According to Gujarat state's farm department, farmers in the state have sown coriander across 128591 hectares as of Dec14 compared to 67278 hectares during the same period last year.
- According to Spices Board of India data, coriander exports for the Apr-Sep period this year is seen at 26750 tonnes, up by nine per cent on yoy basis.
- Coriander exports from India were up 3% on year at 50,250 tn in the last financial year according to the Spices Board.
- Turmeric April futures on NCDEX ended rather flat on Thursday.
- Spices Board pegs turmeric export from India for the period Apr-Sep this year at 99000 tonnes, up by 42 per cent year on.
- India exported 136,000 tn of turmeric in 2019-20, up 2% on year according to the Spices Board.
- India exported 1900 tonnes of small cardamom for the period Apr-Sep, up by 369 per cent year on according to the data from the Spices Board.
- According to the Spices Board, exports of small cardamom fell 27% on year in terms of volume but rose 20% in value terms.
- Spices Board pegs '19-20 small cardamom crop at 11,230 tn, dn 13.2%



TECHNICAL VIEW

<p><b>JEERA NCDEX JAN</b></p>	<p>Pullbacks to 13100-13200 ranges may not be ruled out . However, a voluminous rise above 13400 ranges is necessary for weakness to lessen. As long as this range caps, higher level selling seems to likely. A direct fall below 12750 may intensify weakness.</p>	
<p><b>DHANIYA NCDEX JAN</b></p>	<p>Even as the trend stays weak, pullbacks to 5950-6040 ranges may not be ruled out as long as the support at 5800 is held downside. Sustained trades below 5800 may call for 5700 or more.</p>	
<p><b>TURMERIC NCDEX APR</b></p>	<p>Pullbacks to 5860 seems possible, but a voluminous rise above 5950 is necessary to lessen the prevailing weakness. A direct fall below 5600 may intensify weakness.</p>	
<p><b>CARDAMOM MCX JAN</b></p>	<p>Choppy to weak trades expected.</p>	



## OILSEED COMPLEX

### Market Buzz

- Except soybean, all commodities in the oilseed basket rose on Thursday. MCX Dec CPO prices rose on back of strong demand amid lower stocks in the spot markets along with firmness in BMD Malaysian palm oil prices on reports of strong export demand for palm oil in Malaysia. Jan Soy oil prices also traded higher on robust demand in the spot markets.
- NCDEX Jan soybean prices settled lower due to higher arrivals in the domestic market. However, firmness in U.S CBOT soybean prices capped major falls. Jan Mustard seed moved higher on improved demand from oil millers at lower price levels.
- India's 2020-21 (Jul-Jun) mustard acreage was up 8.4% on year at 7 mln ha as of Thursday, data from the farm ministry showed.
- During Oct-Nov, 1.95 mln tn soybean was crushed against 1.62 mln tn in the year-ago period, according to SOPA.
- India's vegetable oil imports fell 2.7% on year to around 1.1 mln tn in November, according to SEA. As on Dec 1, 581,000 tn edible oil was at ports against 881,000 tn in the year-ago period. Pipelines, meanwhile, had 850,000 tn edible oil against 1.07 mln tn during the year-ago period.
- The USDA has scaled down its estimate for global oilseed production for 2020-21 to 595.7 mln tn from the 597.3 mln tn projected in November, largely due to reduced crops. The agency attributed the latest estimate, down 1.6 mln tn from its previous projection, to a fall in soybean, rapeseed (mustard), sunflower seed, and cottonseed crop plantings. The agency has also slashed its estimate for closing stocks of oilseeds to 97.76 mln tn from the 98.57 mln tn projected the previous month. Global oilseed trade for 2020-21 is projected at 191.8 mln tn, up 1.0 mln tn from the agency's previous estimate. It has scaled down its forecast for global soybean crop by 600,000 tn to 362.1 mln tn in December. Higher soybean crops for Canada and Uruguay are offset by lower production for Argentina, which has reduced 1 mln tn to 50 mln on lower harvested area. Lower soybean output in Argentina, the third largest producer, brings down the country's crush and soymeal exports. This in turn supports the US soybean exports. It has forecast overall US oilseed output for 2020-21 at 123.7 mln tn, against the 123.9 mln tn projected the previous month, on lower soybean production.
- Indian government slashed import duty of crude palm oil. The government cut import duty on crude palm oil by 10% to 27.5%, in the last week, to cool off soaring edible oil prices in domestic markets.
- The Solvent Extractors' Association of India has pegged India's edible oil imports in 2020-21 (Nov-Oct) oil year at 12.5-13.5 mln tn. Last year, India imported 13.5 mln tn of edible oils.
- India's oilmeal exports jumped nearly 33% on year to 317,394 tn in October, according to data released SEA. For Apr-Oct, oilmeal exports were at 1.6 mln tn against 1.5 mln tn in the year-ago period. In October, soymeal exports surged to 120,290 tn from 63,800 tn a year ago. During Apr-Oct, overseas shipments of soymeal were at 438,205 tn against 427,701 tn during the same period last year. Mustard meal exports rose to 101,909 tn from 96,442 tn in the year-ago period. During Apr-Oct, mustard meal exports were at 729,799 tn against 607,786 tn a year ago. During Apr-Oct, South Korea, the top importer from India, bought 509,266 tn oilmeals against 583,706 tn a year ago. Vietnam bought 231,414 tn against 202,532 tn during the same period last year. Thailand's oilmeal imports fell to 122,072 tn from 167,640 tn last year, while the US purchases rose to 131,724 tn from 110,227 tn.
- India's soymeal exports in October nearly doubled on year to 125,000 tn, according to The Soybean Processors Association of India. Domestic consumption of soymeal for food segment was estimated at 50,000 tn in October, largely unchanged from a year ago period, while in feed segment, domestic consumption was pegged at 450,000 tn, against 525,000 tn estimated for the previous year. The association said that 825,000 tn of soybean was crushed in October, as against 720,000 tn last year. Higher crushing is due to a rise in arrival of new crop in spot markets. Soybean arrivals in spot markets were 1.3 mln tn in October against 1.2 mln tn in the year-ago period. By the end of October, soybean stocks left with plants, traders, and farmers are around 9.02 mln tn.
- According to Mustard oil processors association, crushing of mustard seeds by mills in India rose 20% on year to 600,000 tn in October.
- The area under major kharif crops so far in 2020-21 (Jul-Jun) was at 111.7 mln ha, up nearly 5% from a year ago, farm ministry data showed. The area under soybean across the country rose 6.4% on year to 12.12 mln ha as of 24th Sep, according to data from the farm ministry. The Union Cabinet approved a hike in minimum support price for 14 major kharif crops. MSP for soybean hiked by Rs.170 to 3880 from 3710 per 100 kg. Soybean output is estimated at 12.2 mln tn in 2019-20, according to the farm ministry's fourth advance estimate.
- India is likely to grow a record 10 mln tn mustard crop in 2020-21 (Jul-Jun), mainly due to the likelihood of a sharp rise in acreage, according to Solvent Extractors' Association of India. The government has targeted an all-time high crop of 12.5 mln tn for this rabi season. The government has fixed the minimum support price at 4,650 rupees per 100 kg for 2020-21 (Apr-Mar) marketing season against 4,425 rupees per 100 kg the previous year.
- According to the first advance estimates for 2020-21 (Jul-Jun), castor seed output is seen at 1.7 mln tn compared with 1.8 mln tn in the fourth advance estimates for 2019-20, according to the data released by the farm ministry. While, according to traders, crop is seen at 1.5-1.6 mln tn. Farmers have sown castor seed across 792,000 ha in 2020-21 (Jul-Jun), down 16% from a year ago.
- India's castor oil exports jumped 41.6% on year to 53,007 tn in September, according to data from Solvent Extractors' Association of India. The exports have surged 28% from 41,408 tn in August. India's castor meal exports plunged by 26% on year to 54,885 tn in October from 73,832 tonnes, according to data released by The Solvent Extractors' Association of India. Moreover, overall export of oil meals during Apr-Oct plunged 43% on year to 382,238 tn.
- Malaysia's crude palm oil output plunged 13.5% on month to 1.49 mln tn in November, according to Malaysian Palm Oil Board. Total palm oil stock in the country fell 0.6% on month to 1.56 mln tn. Exports of palm oil in November declined 22.2% on month at 1.3 mln tn and those of biodiesel fell 10.2% on month to 20,305 tn.
- Palm oil exports from Malaysia during Dec 1-20 rose 18% on month to 1.07 mln tn, according to private cargo surveyor AmSpec Agri Malaysia.



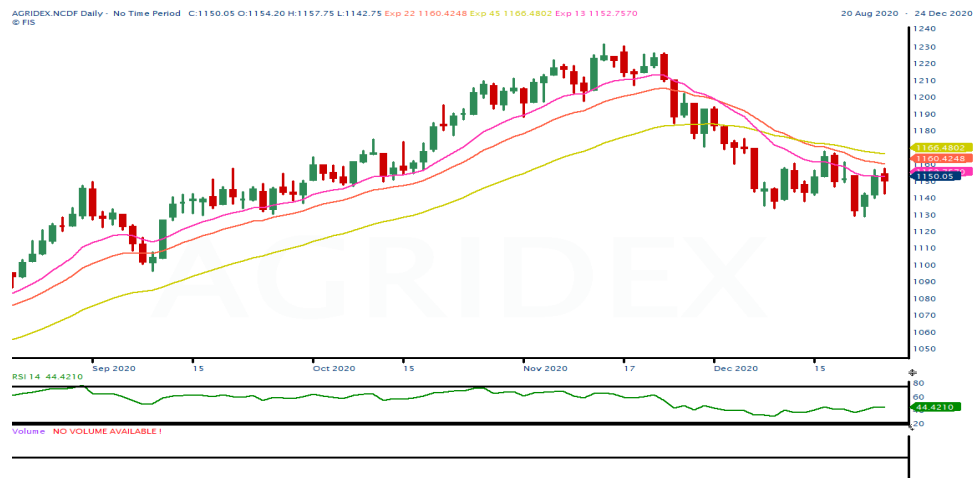
TECHNICAL VIEW

<b>SOYBEAN NCDEX JAN</b>	If prices stays above 4510 could see upside moves targeting 4540/4570 levels.	
<b>REF SOY OIL NCDEX DEC</b>	If prices sustain to trade above 1125 could see upside moves targeting 1160/70 levels. However, some profit booking cannot be ruled out at this juncture.	
<b>RMSEED NCDEX DEC</b>	Prices is likely to continue current short covering rallies towards 5660/5700/5730 levels.	
<b>CASTOR NCDEX NOV</b>	Though short covering rallies witnessed on last trading session, as long as prices stays below 4450 expect corrective moves to continue towards 4300/4280 levels.	
<b>CPO MCX DEC</b>	While prices stays above 940 expect more upside moves targeting 960/970 levels. However, some profit booking cannot be ruled out at this juncture.	





COTTON COMPLEX

Market Buzz

- The USDA has cut its estimate for global cotton output for 2020-21 to 113.9 mln bales (1 US bale = 218 kg) from 116.1 mln bales pegged in November as production is likely to fall in the US, India and Pakistan. The agency has cut output estimate for India to 29.5 mln bales from 30.0 bales. The agency, in its report for December, retained its estimates for India's exports at 5.0 mln bales. Domestic demand is likely to rise to 24.0 mln bales from 23.0 mln bales estimated a month ago. India's ending stock for the ongoing season is seen at 19.4 mln bales. Global cotton consumption is seen at 115.6 mln tn, marginally higher from 114.1 mln bales pegged last month. Global exports are now seen at 43.2 mln bales, compared with 42.9 mln bales, while ending stocks are seen at 97.5 mln bales, against 101.4 mln bales. The agency has also cut its estimate for output in the US to 15.95 mln bales, compared with 17.09 mln bales.
- The UK-based Cotton Outlook has further cut its estimate for global output in 2020-21 (Aug-Jul) to 24.2 mln tn from 24.4 mln tn projected in October, the agency said in its November report. The fall in output estimate is largely due to a considerable reduction in production in Pakistan. A slight increase in production is seen in Uzbekistan. The agency has maintained its crop estimate for India at 6.3 mln tn for the ongoing season. Global cotton consumption in 2020-21 is seen at 24.2 mln tn, against 24.0 mln tn projected the previous month. Consumption is seen higher on likely rise in demand from India. Ending stocks of the fibre for 2020-21 are seen at 57,000 tn, against 353,000 tn projected last month.
- The Cotton Association of India has scaled down its estimate for exports to 5.4 mln bales (1 bale = 170 kg) for the ongoing 2020-21 (Oct-Sep) season, from 6.0 mln bales projected in the previous month. In the current marketing year, India has shipped around 1.2 mln bales up to Nov 30. The association has maintained its output estimate at 35.6 mln bales. In 2019-20, the association had pegged the crop at 36.0 mln bales. Domestic consumption is estimated at 33.0 mln bales in 2020-21, while imports are pegged at 1.40 mln bales. Carryover stocks in the country for the 2020-21 season are seen at 9.35 mln bales, compared with 10.75 mln bales projected the previous year.
- The International Cotton Advisory Committee has scaled down its global output estimate for 2020-21 (Aug-Jul) to 24.7 mln tn in its December report from 25.0 mln tn projected in the previous month. The fall in output estimate has largely been attributed to a smaller crop in the US, Brazil, and Pakistan. Production in India is expected at 6.20 mln tn, compared with 6.07 mln tn projected in the previous year. China is likely to produce 5.9 mln tn, while production in the US is expected to fall to 3.7 mln tn in the ongoing season. The committee has marginally scaled down its estimate for global consumption in 2020-21 to 24.3 mln tn as many countries enter fresh lockdowns because of COVID-19. Ending stock is estimated at 21.7 mln tn against 22.4 mln tn, projected a month ago. The committee has revised upward its estimate for global cotton exports for the ongoing season to 9.4 mln tn from 9.3 mln tn projected in the previous month.
- Global cotton prices will likely average higher on a year-on-year basis in 2021 amid a broader and deeper economic recovery, Fitch Solutions says in a note. It is forecasting cotton prices to average 70c a pound in 2021. Lower global supply in 2020/21 coupled with the sharp uptick in China's import demand will keep prices supported.
- The US Department of Agriculture has cut its estimate for global cotton output for 2020-21 to 116.1 mln bales (1 US bale = 218 kg) from 116.3 mln bales projected in October. The agency has retained its output estimate for India at 30.0 mln bales. India is the world largest producer of cotton. The agency maintained its estimates for India's cotton exports and ending stocks at 5.0 mln bales and 20.9 mln bales, respectively. Domestic demand is seen steady at 23.0 mln bales. Globally, the output is likely to fall as production is expected to decline in Pakistan. Global cotton consumption is seen at 114.1 mln tn, marginally down from 114.2 mln bales projected last month. Global exports for 2020-21 are now seen at 42.9 mln bales, compared with 42.2 mln bales estimated a month ago. Ending stocks are seen higher at 101.4 mln bales against 101.1 mln bales, the report said. The agency has kept its estimate for output in the US largely steady at 17.09 mln bales.
- The much awaited and long delayed export agreement between Cotton Corp of India and Bangladesh government is now in its final stage and may materialise by December, said Pradeep Agarwal, chairman and managing director of the organisation.
- The area under major kharif crops so far in 2020-21 (Jul-Jun) was at 111.7 mln ha, up nearly 5% from a year ago, farm ministry data showed. Farmers have sown cotton across 13.04 mln ha in the 2020-21 (Jul-Jun) season, up by 2.1% from a year ago, as of 25th Sept., farm ministry.
- India's cotton output in the 2020-21 (Oct-Sep) marketing year is seen at 38.0 mln bales (1 bale = 170 kg), up 4% on year, according to traders.Govt pegs 2020-21 cotton crop at 37.1 mln bales vs 35.5 mln bales.
- Cotton production in Gujarat is likely to fall by 6% to 8.2 mln bales in 2020-21 (Jul-Jun) due to a sharp fall in acreage, according to the first advance estimates released by the state's farm department. Cotton acreage in Gujarat is down at 2.28 mln ha in the current season compared with 2.65 mln ha last year. The fall in sowing area is mainly due to the shift to other lucrative crops like groundnut.
- Govt cuts 2019-20 cotton output view to 35.5 mln bales vs 36.0 mln.
- India's cotton exports are expected to touch 6.0 mln bales (1 bale = 170 kg) in the current marketing year 2019-20 (Oct-Sep) due to strong demand and lower domestic prices, which have made foreign sales economically viable, trade officials said.
- The government has raised the support price of medium staple cotton by 260 rupees per 100 kg to 5,515 rupees, and that of long staple by 275 rupees to 5,825 rupees.



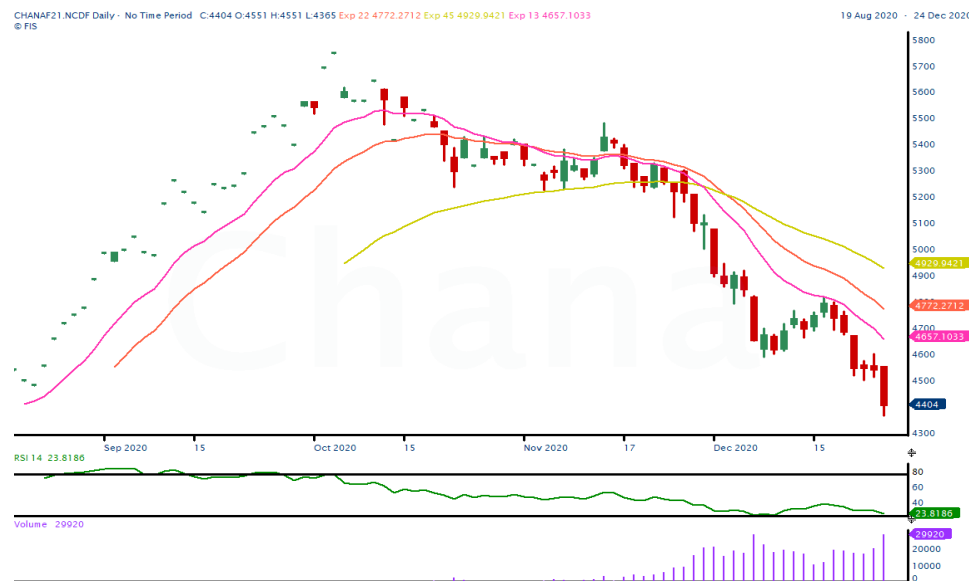
TECHNICAL VIEW

<p><b>AGRIDEX NCDEX</b></p>	<p>Though short covering rallies continued on last Thursday too, corrective selloffs is more likely towards 1120 levels if prices unable to move above 1162 levels.</p>	
<p><b>KAPAS NCDEX APR21</b></p>	<p>If prices holds the support of 1180 could see pull-backs to 1210/1218 levels. Else, could see selloffs towards 1174/1160 levels.</p>	
<p><b>COTTON MCX DEC</b></p>	<p>As long as prices stays above 19960 could see upside moves targeting 20500/20700 levels.</p>	
<p><b>COCUDAKL NCDEX JAN</b></p>	<p>Inability to move above 2032 could see downside moves targeting 2000/1980 levels. However, any direct rise above the same could negate the bearish outlook.</p>	

OTHERS

Market Buzz

- Chana NCDEX January plunged to its weakest level in more than four months on Thursday on expectation of bumper crop in the ongoing rabi season.
- Farmers in the country have sown rabi chana across 9.8 million hectares so far, up 10 per cent compared to same period last year, farm ministry data showed.
- After offloading 75% of the 2.8 mln tn of chana procured under the under price support scheme in 2020-21 (Apr-Mar) marketing season, the National Agricultural Cooperative Federation of India is likely to wait till prices rise before disposing off the remaining 25%, an official with the agency said.
- The government raised chana MSP by Rs.225 to Rs.5100/100kg.
- According to the Agricultural and Processed Food Products Export Development Authority, India's guar gum export for the Apr-Oct period this year was 126808 tonnes compared to 256236tonnes during the corresponding period last year.
- Export of guar gum have rose in the month of Sep-20 by 8.21 percent compared to previous month. India exported around 13879 tonnes of guar gum at an average FoB of \$ 1708 per tonne in the month of Sep-20 compared to 12826 tonnes in Aug-20 at an average FoB of \$ 1823 per tonne. Exports are expected to increase in Oct-20 in expectation of good demand in overseas market.
- Export of guar split have fell in the month of Sep-20. Exports in the month of Sep-20 are down by around 5.32% compared to previous month. India exported around 625 tonnes of guar split in the month of Sep-20 at an average FoB of \$ 950 per tonne compared to 660 tonnes in Aug20 at an average FoB of \$ 1117 per tonne.
- MCX to launch rubber futures on Monday, 28 December 2020.
- The Association of Natural Rubber Producing Countries has pegged the global rubber output in 2021 at 13.67 mln tn, it said in its monthly report. The estimate reflects an 8.6%-rise on a year-on-year basis. In 2021, the global consumption of natural rubber is anticipated to make a recovery. It is seen increasing 4.9% to 13.43 mln tn, the agency said. However, consumption is not expected to match up to the levels seen in 2019 and 2018, the agency said in its report. In 2019 and 2018, the global consumption of natural rubber was at 13.76 mln tn and 13.89 mln tn, respectively. For the year 2020, the agency has further scaled down its output estimate to 12.59 mln tn, compared with 12.90 mln tn pegged in September. The current estimate reflects a 9%-decline from the previous year. The global consumption in 2020 is expected to fall 6.9% on year to 12.81 mln tn, the agency said.



TECHNICAL VIEW

<b>CHANA NCDEX JAN</b>	Even as the trend prevails weak, pullbacks to 4450-4470 or even more to 4540 may not be ruled out before resuming declining. However, sustained trades below 4380 may see more downsides.	
<b>GUARSEED NCDEX JAN</b>	A rise above 3940 or a fall past 3840 accompanied by substantial volume could set fresh directions for the day.	
<b>GUARGUM NCDEX JAN</b>	A rise above 6100 or a fall past 5880 could probably signal fresh directional moves for the day	
<b>RUBBER ICEX JAN</b>	May trade firm.	

## TECHNICAL LEVELS

Commodity	Contract	Open*	High*	Low*	Close*	S3	S2	S1	Pivot	R1	R2	R3
<b>SPICES</b>												
Jeera	JanNCDEX	12890	12985	12830	12955	12707	12768	12862	12923	13017	13078	13172
Turmeric	AprNCDEX	5766	5818	5764	5802	5717	5741	5771	5795	5825	5849	5879
Cardamom	JanMCX	1500	1500	1500	1500	1500	1500	1500	1500	1500	1500	1500
Dhaniya	JanNCDEX	5900	5900	5764	5860	5647	5705	5783	5841	5919	5977	6055
Menthaoil	DecMCX	994.0	1000.0	990.1	997.5	982	986	992	996	1002	1006	1012
<b>PULSES</b>												
Chana	JanNCDEX	4551	4551	4365	4404	4143	4254	4329	4440	4515	4626	4701
Guarseed	JanNCDEX	3900	3944	3857	3915	3780	3818	3867	3905	3954	3992	4041
Guargum	JanNCDEX	5989	6044	5885	5987	5741	5813	5900	5972	6059	6131	6218
<b>OIL &amp; OIL SEEDS</b>												
Soybean	JanNCDEX	4509	4560	4480	4501	4387	4434	4467	4514	4547	4594	4627
RM seed	JanNCDEX	5660	5690	5593	5648	5500	5547	5597	5644	5694	5741	5791
CPO	DecMCX	965.3	965.9	956.6	958.5	945	951	955	960	964	970	973
Soyoil	JanNCDEX	1154.0	1159.5	1145.4	1148.1	1128	1145	1143	1151	1157	1157	1171
Castor seed	JanNCDEX	4408	4448	4382	4434	4329	4355	4395	4421	4461	4487	4527
<b>CEREALS</b>												
Wheat	JanNCDEX	1733	1733	1733	1733	1733	1733	1733	1733	1733	1733	1733
Barley	JanNCDEX	1456	1456	1456	1456	1456	1456	1456	1456	1456	1456	1456
<b>OTHERS</b>												
Cocud^	JanNCDEX	2025	2031	1975	2002	1918	1947	1974	2003	2030	2059	2086
Kapas	Apr21 NCDEX	1203.0	1205.0	1177.0	1182.5	1143	1160	1171	1188	1199	1216	1227
Cotton	DecMCX	20340	20430	20270	20300	20077	20173	20237	20333	20397	20493	20557
Rubber	JanICEX	15810	15900	15810	15900	15750	15780	15840	15870	15930	15960	16020

Pivot Point: A predictive indicator of the market which is calculated as an average of significant prices from the performance of a market in the prior trading period. An open above the pivot point is generally considered bullish and vice versa.  
 S1, S2 & S3 are supports and R1, R2, and R3 are resistances from where a turnaround can be anticipated.  
 \*Open, High, Low and Close prices of previous trading day / ^Cottonseed Oil Cake



Strong bias or bullish



Choppy or Sideways



Weak bias or bearish



Mild bullish bias



Mild bearish bias

TRADING SIGNALS

Commodities	Intraday	Overall	Volatility		Short term		Medium term		Long term	
	View	View	1 day	Annualised	3 day EMA	5 day EMA	13 day EMA	22 day EMA	45 day EMA	60 day EMA
Pepper Jan ICEX	FLAT/CHOPPY	POSITIVE	0.43%	6.8%	FLAT	FLAT	POSITIVE	POSITIVE	POSITIVE	POSITIVE
Jeera Jan NCDEX	POSITIVE	NEGATIVE	0.99%	15.7%	POSITIVE	POSITIVE	NEGATIVE	NEGATIVE	NEGATIVE	NEGATIVE
Turmeric Apr NCDEX	POSITIVE	NEGATIVE	0.82%	13.0%	POSITIVE	POSITIVE	NEGATIVE	NEGATIVE	NEGATIVE	#N/A
Cardamom Jan MCX	FLAT/CHOPPY	FLAT/CHOPPY	0.00%	0.0%	FLAT	FLAT	FLAT	FLAT	FLAT	FLAT
Dhaniya Jan NCDEX	NEGATIVE	HIGHLY NEGATIVE	1.25%	19.8%	NEGATIVE	NEGATIVE	NEGATIVE	NEGATIVE	NEGATIVE	NEGATIVE
Chana Jan NCDEX	NEGATIVE	HIGHLY NEGATIVE	1.52%	24.1%	NEGATIVE	NEGATIVE	NEGATIVE	NEGATIVE	NEGATIVE	NEGATIVE
Guarseed10 Jan NCDEX	POSITIVE	NEGATIVE	1.07%	17.1%	POSITIVE	POSITIVE	NEGATIVE	NEGATIVE	NEGATIVE	NEGATIVE
Guargum Jan NCDEX	POSITIVE	NEGATIVE	1.54%	24.4%	POSITIVE	POSITIVE	NEGATIVE	NEGATIVE	NEGATIVE	NEGATIVE
Soybean Jan NCDEX	POSITIVE	HIGHLY POSITIVE	1.30%	20.6%	POSITIVE	POSITIVE	POSITIVE	POSITIVE	POSITIVE	POSITIVE
Ref. Soyoil Jan NCDEX	POSITIVE	HIGHLY POSITIVE	1.26%	19.9%	POSITIVE	POSITIVE	POSITIVE	POSITIVE	POSITIVE	POSITIVE
RMseed Jan NCDEX	POSITIVE	POSITIVE	1.49%	23.6%	POSITIVE	POSITIVE	POSITIVE	POSITIVE	NEGATIVE	NEGATIVE
CPO Dec MCX	POSITIVE	HIGHLY POSITIVE	1.30%	20.6%	POSITIVE	POSITIVE	POSITIVE	POSITIVE	POSITIVE	POSITIVE
Castor Jan NCDEX	POSITIVE	FLAT/CHOPPY	0.94%	14.9%	POSITIVE	POSITIVE	POSITIVE	NEGATIVE	NEGATIVE	NEGATIVE
Kapas21 Apr NCDEX	NEGATIVE	NEGATIVE	1.28%	20.4%	NEGATIVE	NEGATIVE	NEGATIVE	NEGATIVE	POSITIVE	POSITIVE
Cotton Dec MCX	FLAT/CHOPPY	POSITIVE	0.91%	14.4%	NEGATIVE	POSITIVE	POSITIVE	POSITIVE	POSITIVE	POSITIVE
Cocudak1 Jan NCDEX	NEGATIVE	NEGATIVE	2.03%	32.2%	NEGATIVE	FLAT	NEGATIVE	NEGATIVE	POSITIVE	POSITIVE
Wheat Jan NCDEX	POSITIVE	FLAT/CHOPPY	0.60%	9.5%	POSITIVE	POSITIVE	POSITIVE	NEGATIVE	NEGATIVE	NEGATIVE
Barley Jan NCDEX	NEGATIVE	FLAT/CHOPPY	0.44%	6.9%	NEGATIVE	NEGATIVE	POSITIVE	FLAT	FLAT	POSITIVE
Menthaoil Dec MCX	POSITIVE	HIGHLY POSITIVE	0.74%	11.7%	POSITIVE	POSITIVE	POSITIVE	POSITIVE	POSITIVE	POSITIVE
Rubber Jan ICEX	POSITIVE	POSITIVE	1.08%	17.1%	POSITIVE	POSITIVE	NEGATIVE	NEGATIVE	POSITIVE	POSITIVE

Trading signals is prepared based on statistical analysis and is purely on technical indicators like exponential moving averages (EMAs), Relative strength Index (RSI) and stochastic, putting altogether provides an idea about intraday, short, medium and long term trend of the commodities. It also signals the risk of an investment in both agricultural and global commodities as well. Based on all listed indicators above, investors were able to fix a daily, near-term and long term trends. However, must be cautious especially for real-time intraday traders/jobbers.

**Trading Strategy based on EMA**

Trading strategies mentioned in the report is mainly based on 3, 5, 13, 22, 45 & 60 days exponential Moving Averages. 3 and 5 day EMA has taken for developing Intraday trading strategy, 13 days and 22 days EMA for Short term and Medium term, while 45,60 days EMA for Long term. Here, we use EMAs for POSITIVE and NEGATIVE signals. POSITIVE signal is formed when a short-term moving average (eg: 30 day) crosses from below a longer-term average (eg: 60 day), which is considered bullish. Likewise, NEGATIVE signal is formed when a short-term moving average (eg: 30 day) crosses from above a longer-term moving average (eg: 60 day), which is considered bearish.

**Intraday and Overall view** The section is consist of both Intraday and Overall view. The Intraday view is calculated by netting out of POSITIVES/NEGATIVES/FLAT signals formed in the short term trend. On the another part, Overall view is calculated by netting out number of POSITIVES/NEGATIVES/FLAT signals formed in the short, Medium and long term trend.

**Volatility** is a measure for dispersion of price of a financial instrument over a period of time by using Standard deviation and annualised actual volatility. Standard deviation is used to calculate one day volatility. Whereas, Annualized Actual Volatility (AAV) is measured as annualized standard deviation of the continuously compounded daily returns of the asset. Generally the thumb rule is that, higher the volatility higher the risk of the asset. See the table below the range risk ratings.

Annualised Volatility >	Risk %	Ratings	Risk %	Ratings	Risk %	Ratings	Risk %	Ratings	Risk %	Ratings
> 35%	> 35%	Very High risk	27 to 34%	High risk	20 to 26%	Moderate risk	11 to 19%	Low risk	1 to 10%	Very Low risk



## GENERAL DISCLOSURES & DISCLAIMERS:

### CERTIFICATION,

We, Vinod T P, Hareesh V and Anu V Pai, employee of Geojit Financial Services Limited (GFSL), author of this report, hereby certify that all the views expressed in this research report (report) reflect my/ our personal views about any or all of the subject issuer or securities/ commodities.

### DISCLAIMER

This report has been prepared by GFSL and the report & its contents are the exclusive property of GFSL and the recipient cannot tamper with the report or its contents in any manner and the said report, shall in no case, be further distributed to any third party for commercial use, with or without consideration.

GFSL has taken steps to ensure that facts in this report are based on reliable information but cannot testify, nor make any representation or warranty, express or implied, to the accuracy, contents or data contained within this report. It is hereby confirmed that wherever GFSL has employed a rating system in this report, the rating system has been clearly defined including the time horizon and benchmarks on which the rating is based.

Descriptions of any Commodity or Commodities mentioned herein are not intended to be complete and this report is not, and should not be construed as an offer or solicitation of an offer, to buy or sell any commodity or other financial instruments. GFSL has not taken any steps to ensure that the commodity/(ies) referred to in this report are suitable for any particular investor. This Report is not to be relied upon in substitution for the exercise of independent judgment. Opinions or estimates expressed are current opinions as of the original publication date appearing on this Report and the information, including the opinions and estimates contained herein, are subject to change without notice. GFSL is under no duty to update this report from time to time.

### RISK DISCLOSURE

Geojit Financial Services Limited and/or its Affiliates and its officers, directors and employees including the analyst/authors shall not be in any way be responsible for any loss or damage that may arise to any person from any inadvertent error in the information contained in this report. Investors may lose his/her entire investment under certain market conditions so before acting on any advice or recommendation in these material, investors should consider whether it is suitable for their particular circumstances and, if necessary, seek professional advice. This report does not take into account the specific investment objectives, financial situation/circumstances and the particular needs of any specific person who may receive this document. The user assumes the entire risk of any use made of this information. Each recipient of this report should make such investigation as it deems necessary to arrive at an independent evaluation of an investment in the Commodity/(ies) referred to in this report (including the merits and risks involved). The price, volume and income of the investments referred to in this report may fluctuate and investors may realize losses that may exceed their original capital.

The investments or services contained or referred to in this report may not be suitable for all equally and it is recommended that an independent investment advisor be consulted. In addition, nothing in this report constitutes investment, legal, accounting or tax advice or a representation that any investment or strategy is suitable or appropriate to individual circumstances or otherwise constitutes a personal recommendation of GFSL.

### REGULATORY DISCLOSURES:

Geojit Financial Services Limited's Associates consists of companies such as Geojit Technologies Private Limited (GTPL- Software Solutions provider), Geojit Credits Private Limited (GCPL- NBFC Services provider), Geojit Investment Services Limited (GISL- Corporate Agent for Insurance products), Geojit Financial Management Services Private Limited (GFMSL) & Geojit Financial Distribution Private Limited (GFDPL), (Distributors of Insurance and MF Units). In the context of the SEBI Regulations on Research Analysts (2014), Geojit Financial Services Limited affirms that we are a SEBI registered Research Entity and we issue research reports /research analysis etc that are prepared by our Research Analysts. We also affirm and undertake that no disciplinary action has been taken against us or our Analysts in connection with our business activities.

In compliance with the above mentioned SEBI Regulations, the following additional disclosures are also provided which may be considered by the reader before making an investment decision:

#### 1. Disclosures regarding Ownership:

GFSL confirms that:

It/its associates have no financial interest or any other material conflict in relation to the subject Commodity futures covered herein at the time of publication of this report.

Further, the Research Analyst confirms that:

He, his associates and his relatives have no financial interest in the subject Commodity futures covered herein, and they have no other material conflict in the subject Commodity at the time of publication of this report.

#### 2. Disclosures regarding Compensation:

During the past 12 months, GFSL or its Associates have not received any compensation or other benefits from any entity/ third party in connection with the Commodity futures mentioned in this report.

#### 3. Disclosure regarding the Research Analyst's connection with the Commodity futures:

It is affirmed that we, Vinod T P, Hareesh V and Anu V Pai, employed as Research Analysts by GFSL and engaged in the preparation of this report have no substantial ownership or financial interest over any Commodity futures mentioned in the report.

#### 4. Disclosure regarding Market Making activity:

Neither GFSL nor its Research Analysts have engaged in market making activities for the subject Commodity futures.

Copyright in this report vests exclusively with GFSL

Geojit Financial Services Ltd., 34/659-P, Civil Line Road, Padivattom, Kochi - 682024  
Toll-Free Number: 1800-425-5501 / 1800-103-5501, Paid Number: 91 - 484 - 2901000  
Research Entity SEBI Registration Number: INH200000345  
Email id: customercare@geojit.com, Web: www.geojit.com

**SEBI Stock Broker Registration No INZ000104737, Research Entity SEBI Reg No: INH200000345, Investment Adviser SEBI Reg No: INA200002817, Portfolio Manager: INP000003203, SEBI Registration No. Stock Broker: INZ000104737 / Depository Participant: IN-DP-325-2017, ARN Regn.Nos:0098, IRDA Corporate Agent (Composite) No.: CA0226.**