



**GEOJIT**

PEOPLE YOU PROSPER WITH

# AGRI PICKS

*A Daily Report on Agricultural Commodities*

Wednesday, December 29, 2021

[TODAY'S PICKS](#)



The views/strategies expressed in this today's picks are Pre- Market Open views/strategies i.e., BUY/SELL posted in the today's Picks are purely based on technical analysis and recommended for intraday trading. Fundamental factors, sudden currency volatility and other data/news events that have a bearing on price movements were not considered while preparing this report.

## AGRI BUZZ

- The UK-based Cotton Outlook has scaled down its estimate for global production in 2021-22 (Aug-Jul) by 43,000 tn to 26.0 mln tn, the agency said in its December report.
- The United Arab Emirates has lifted the ban on import of eggs and other poultry products from India, according to a report by The Economic Times. The move follows an assurance by New Delhi that it would follow biosafety norms set by the World Organisation for Animal Health to prevent infection from bird flu, the report said.

Futures		Spot
Contract/spot	JEERA - JAN22	Unjha
Rate	16200	16081.8
% chg	0.19	-0.06
1 week low	16080	16020
1 week High	16310	16207.15
Futures		Spot
Contract/spot	CHANA - JAN22	Bikaner
Rate	4713	4680.55
% chg	-2.38	-0.41
1 week low	4693	4675
1 week High	4845	4851.4
Futures		Spot
Contract/spot	SOYABEAN - JAN22	Indore
Rate	6350	6535
% chg	0.4	1.29
1 week low	6000	6321
1 week High	6450	6535
Futures		Spot
Contract/spot	CASTOR SEED - JAN22	Deesa
Rate	5812	5961.65
% chg	-0.62	-0.76
1 week low	5754	5961.65
1 week High	5994	6092.85
Futures		Spot
Contract/spot	RUBBER - JAN22	Kottayam
Rate	17934	16250
% chg	-1	-1.81
1 week low	16250	Exchange
1 week High	16550	Exchange

Futures		Spot
Contract/spot	TURMERIC	Nizamabad
Rate	8048	8079.65
% chg	5.48	0.17
1 week low	7934	8065.9
1 week High	8086	8100
Futures		Spot
Contract/spot	GUAR SEED10 - JAN22	Jodhpur
Rate	6103	6115.3
% chg	0.15	0
1 week low	6042	6110.45
1 week High	6208	6158.35
Futures		Spot
Contract/spot	REFINED SOYA OIL - JAN22	Kandla
Rate	1182	1202
% chg	1	0.9
1 week low	1155	1174.25
1 week High	1182	1202
Futures		Spot
Contract/spot	KAPAS - FEB22	Rajkot
Rate	1908.5	1752.45
% chg	0.74	1.27
1 week low	1869.5	1677.15
1 week High	1917.5	1755.8
Futures		Spot
Contract/spot	MAIZE - Feed/Industrial Grade	Gulabbagh
Rate		1725
% chg		0
1 week low		1722.5
1 week High		1741.25

Futures		Spot
Contract/spot	CORIANDER - JAN22	Kota
Rate	8600	8734.2
% chg	0.61	0.07
1 week low	8452	8727.8
1 week High	8668	8790.65
Futures		Spot
Contract/spot	Guar Gum Refined Splits - JAN22	Jodhpur
Rate	11042	11128.75
% chg	0.68	0.63
1 week low	10850	11008.35
1 week High	11340	11233.35
Futures		Spot
Contract/spot	RAPE MUSTARD SEEDS - JAN22	Jaipur
Rate	7650	7539.3
% chg	2.35	1.13
1 week low	7474	7343.4
1 week High	7650	7539.3
Futures		Spot
Contract/spot	COTTON SEED OIL CAKE AKOLA - JAN22	AKOLA
Rate	2977	2967.95
% chg	2.2	1.17
1 week low	2810	2848.15
1 week High	2990	2967.95
Futures		Spot
Contract/spot	BARLEY - JAN22	Jaipur
Rate	2403	Symbol not found
% chg	-0.25	Symbol not found
1 week low	2402.5	Symbol not found
1 week High	2410.5	Symbol not found




SPICES COMPLEX

Market Buzz

- Lacklusture and range bound moves were witnessed in NCDEX spices complex on Tuesday. Turmeric April futures inched down, while Jeera and Coriander January futures ended the session in green.
- Exports of spices from India during Apr-Sep declined 8% on year to 780,273 tn, according to data from the Spices Board India.
- Spices Board pegs Apr-Sep jeera exports at 139,295 ton, down 14%.
- Spices Board pegs Apr-Sep turmeric exports at 77,245 ton, down 26%.
- Spices Board pegs Apr-Sep pepper exports at 10,844 ton, up 24%.
- Spices Board pegs Apr-Sep small cardamom exports 4,240 ton, up 101%.
- Spices Board pegs Apr-Sep coriander exports at 24,459 ton, down 13%
- According to third advanced estimates by the farm department, spices output is seen rising to 10700000 tonnes in 2020-21, up by 5.5 per cent compared to 10140000 produced in 2019-20.
- According to the Gujarat State farm dept., jeera has been sown across 274298 ha as of December 13, compared to 453704 ha during the same period last year.
- Jeera production is seen at 856,505 ton in FY 2020-21, down 6.1% on year according to the Spices Board.
- India exported 299,000 tn of jeera in 2020-21, up 40% on year according to the Spices Board.
- The Spices Board has pegged coriander production at 822,210 tn, up 17.3% on year.
- According to Spices Board, Coriander exports from India were up 21% on year at 57,000 ton.
- Government sees 2020-21 coriander output at 720000 tons compared to 701000 tons a year ago.
- Spices Board sees exports of turmeric up 33% to 183000 tonnes in FY 2020-21 on yoy basis.
- Government sees 2020-21 turmeric output at 1.11 million tonnes compared to 1.15 million tons a year ago.
- Spices Board pegs FY21 small cardamom export 6,500 ton, up 251% on year.
- Output of small cardamom is seen rising by 100% on year to 22520 tons according to the Spices Board.



TECHNICAL VIEW

<p><b>JEERA NCDEX JAN</b></p>	<p>Choppy moves inside 16000-16500 expected.</p>	
<p><b>DHANIYA NCDEX JAN</b></p>	<p>May vary inside 8450-8680 ranges.</p>	
<p><b>TURMERIC NCDEX APR</b></p>	<p>Choppy moves inside 9200-8920 ranges expected.</p>	

## COTTON COMPLEX

### Market Buzz

- The Cotton Association of India has maintained its production estimate for the 2021-22 (Oct-Sep) marketing season at 36.0 mln bales (1 bale = 170 kg). The association has estimated cotton production in north India, which includes Punjab, Haryana and Rajasthan, at 5.3 mln bales. In the central zone, which includes Gujarat, Maharashtra and Madhya Pradesh, the output is estimated at 20.4 mln bales. In the southern region, production is pegged at 9.6 mln bales. Of the total crop, around 7.8 mln bales had arrived in markets across India till November. Exports in the ongoing marketing year are pegged at 4.8 mln bales. India shipped around 700,000 bales of cotton till November. The association has also maintained its estimate for domestic cotton consumption at 33.5 mln bales, while imports are seen at around 1.0 mln bales. Ending stock for the season has been estimated at 6.2 mln bales.
- The US Department of Agriculture has scaled down its estimate for 2021-22 (Aug-Jul) global cotton production to 121.6 mln bales (1 US bale = 218 kg), from 121.8 mln bales projected a month ago. The downward revision was mainly due to a likely smaller crop in Pakistan, the agency said in its World Agricultural Supply and Demand Estimates report for December. Global cotton consumption is now seen slightly higher at 124.3 mln bales in 2021-22, as against 124.1 mln bales projected earlier. Exports are estimated at 47.0 mln bales, higher than the earlier projection of 46.6 mln. Exports are projected higher for Brazil and the Franc Zone. The agency has revised downward its 2021-22 global ending stocks estimate to 85.7 mln bales from 86.9 mln bales. Cotton production in India maintained at 28.0 mln bales. Domestic consumption is seen at 25.8 mln bales, while exports are estimated at 5.8 mln bales. Ending stocks for the country are seen at 10.8 mln bales for 2021-22 season, compared with 11.3 mln bales seen a month ago. In the US, production is seen slightly higher at 18.3 mln bales due to rise in yields. Exports are maintained at 15.5 mln bales. US is the top exporter of cotton.
- India's cotton exports in the ongoing 2021-22 (Oct-Sep) marketing year have slowed due to higher prices in the domestic market, making overseas sales economically unviable, trade officials said.
- The International Cotton Advisory Committee has lowered its forecast for global prices for 2021-22 (Aug-Jul) due to a rise in global production and ending stocks estimate, the agency said in a report. The committee revised downward its price forecast for COTLOOK A Index, a global benchmark for prices of raw cotton, by 1 cent from the previous month to 103 cents per pound. In 2021-22 season, the committee estimated global ending stocks for the season at 20.5 mln tn, slightly higher than 20.4 mln tn in the previous season. Global consumption is seen almost steady at 25.6 mln tn. The agency sees global export for the season at 10.2 mln tn, as against 10.6 mln tn a year ago. Global production for the ongoing season is estimated at 25.7 mln tn, compared with 24.3 mln tn in the previous season. The rise has largely been attributed to higher production in the US and Brazil. In the US, cotton production is estimated at 3.96 mln tn, against 3.18 mln tn a year ago. Output in India, the largest producer, is expected to be 5.9 mln tn, compared with 6.0 mln tn in the previous year.
- The UK-based Cotton Outlook has scaled up its estimate for global production in 2021-22 (Aug-Jul) by 97,000 tn to 26.0 mln tn, the agency said in its November report. The estimate has been revised upward as production in the African Franc zone and Turkey is expected to be higher. The agency has maintained its output estimate in the US at 3.92 mln tn. The outlook for cotton production in India, the largest producer, has been maintained at 6.17 mln tn. The production in China is seen at 5.71 mln tn. The agency maintained its estimate for global consumption in 2021-22 at 26.15 mln tn. Global cotton ending stocks are estimated at 110,000 tn for the ongoing 2021-22 season.
- India's cotton exports have slowed down in the current marketing year that began on Oct 1 as higher domestic consumption led to a tight supply situation and a rise in local prices, said market experts. In the ongoing marketing year of 2021-22 (Oct-Sep), around 200,000 bales of cotton were exported till October. Most of the consignments were shipped to Bangladesh followed by China and Vietnam, a trade official said. "Forward export deals of 600,000-700,000 bales of cotton for Nov-Dec delivery are still in transit, these deals were struck at a price of 115-125 cents per pound on a cost-and-freight basis," said Dharmendra Jain, director of Ahmedabad-based D.P. Cotton. Exports may touch around 900,000 bales by December, which is sharply lower than the previous year. In 2020-21, India shipped around 1.2-1.5 mln bales during Oct-Dec, industry experts said.
- The new season for cotton which started on Oct 1, is expected to be good for farmers as the market price of the fibre is currently more than the minimum support price, due to firm demand and a rise in global prices.
- Sowing of cotton across the country has ended and farmers have sown the crop across 12 mln ha in the 2021-22 (Jul-Jun) kharif season, down 6% from a year ago, data from the farm ministry.
- India's cotton output in the 2021-22 (Oct-Sep) marketing year is seen at 36.2 mln bales (1 bale = 170 kg), as per the median of estimates of 13 prominent players in the cotton value chain polled by Informist.
- In the ongoing 2021-22 (Jul-Jun) season, cotton acreage across the country was 11.9 mln ha as on Thursday, down 5.8% from a year ago, data from the farm ministry showed.
- In the Union Budget for 2021-22 (Apr-Mar), Finance Minister Nirmala Sitharaman proposed customs duty of 5% on cotton and 10% on cotton waste. She also proposed an Agriculture Infrastructure and Development Cess of 5% on cotton, taking the overall customs duty to 10%. Customs duty on raw silk and silk yarn or yarn spun from silk waste has been increased to 15% from 10% earlier.



### TECHNICAL VIEW

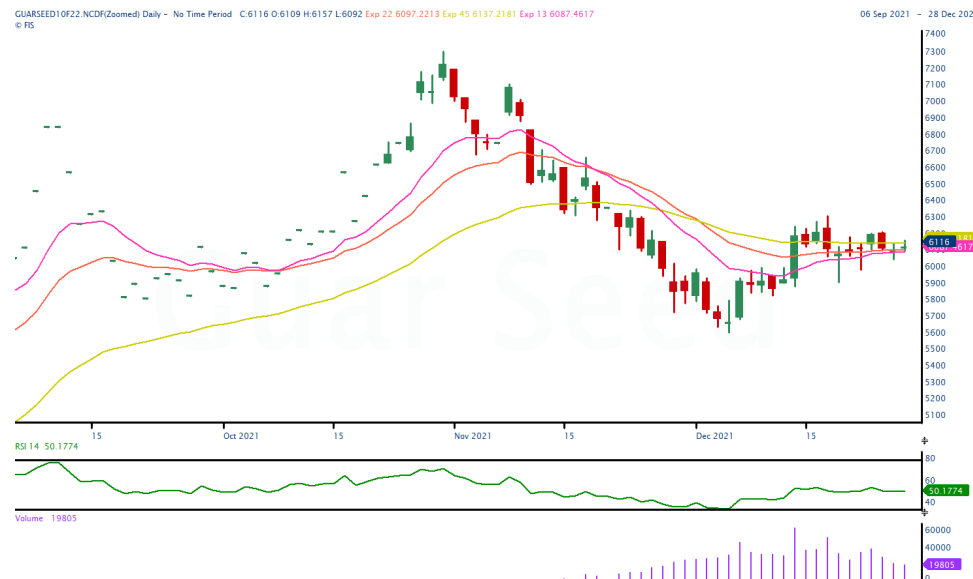
<b>AGRIDEX NCDX</b>	If prices sustain to trade above 1690 expect to see more upside moves towards 1720/1730 levels.	
<b>KAPAS NCDX APR22</b>	If prices sustain above 1900 could see a major rally towards 1930/1940 levels. Else, could see a corrective selloffs for the day.	
<b>COTTON MCX DEC</b>	If prices sustain to trade above 32410 could see upside moves towards 33500/33800 levels.	
<b>COCUDAKL NCDX JAN</b>	Upside momentum are more likely to continue towards 3000/3050 levels.	



OTHERS

Market Buzz

- As of Wednesday, the area under rabi chana across the country this year was at 10.25 mln ha, largely unchanged from a year ago, data from the farm ministry showed. States such as Andhra Pradesh, Bihar, Gujarat, Maharashtra, Punjab, Telangana, and Uttar Pradesh have seen a rise in acreage. On the other hand, acreage fell in Karnataka, Chhattisgarh, Madhya Pradesh and Jharkhand. Farmers in Madhya Pradesh, the largest grower, had sown chana across nearly 2.4 mln ha, down 2.7% on year, so far this rabi season. The government had fixed the minimum support price of chana for the 2022-23 (Apr-Mar) marketing season at 5,230 rupees per 100 kg, as against 5,100 rupees the previous year.
- The Securities and Exchange Board of India has asked the National Commodity and Derivatives Exchange to not launch any new chana contracts on its platform till further notice, the market regulator said in a release on August 16. NCDEX has also been directed to not take any new positions for the running contracts, and only squaring up of positions will be allowed on the platform with immediate effect, according to the official release.
- Government raises MSP for Rabi crops for season 2022-23. MSP for chana has increased by 2.5 % to Rs. 5230/qtl. against Rs. 5100/qtl previous year.
- India's guar gum exports increased in the month of October 2021 by 21.74% to 23,292 tonnes compared to 19,132 tonnes during previous month at an average FoB of US \$ 1849 per tonne in the month of Oct'2021 as compared to US \$ 1756 per tonne previous month. Further, the gum shipments were up by 62.53% in Oct'2021 compared to the same period last year. Of the total exported quantity, around 10,083 tonnes bought by US, Russia 3,327 tonnes, Germany 2,711 tonnes, china 789 tonnes, Australia 466 tonnes and Canada 911 tonnes.
- India's guar split exports decreased in the month of Oct'2021 by 29.51% to 2,580 tonnes compared to 3,660 tonnes previous month at an average FoB of US \$ 1325 per tonne in the month of Oct'21 compared to US \$ 1,370 per tonne previous month. However, the guar split shipments gone down by 24.78 % in Oct 2021 compared to the same period last year. Of the total exported quantity, around 1,900 tonnes bought by China, US 500 tonnes and Netherland 120 tonnes.
- According to Rajasthan govt 2021-22 first advance estimates, Guar seed production estimate pegged at 13.73 lakh tonnes vs 11.36 lakh tonne last year, Additionally, 2021-22 acreage stood at 21.13 lakh hectare as compared to 24.84 lakh hectare last year. Yield pegged higher at 650 kg/Ha vs 458 kg/Ha last year.
- According to Gujarat govt 2021-22 first advance estimates, Guar Seed production estimate pegged at 1.01 lakh tonne Vs 0.85 Lakh tonnes last year, Additionally, 2021-22 acreage stood at 1.21 lakh ha Vs 1.22 lakh ha. Yield pegged higher at 873 kg/ha Vs 699 Kg/ Ha last year.
- A mixed trend was seen in natural rubber market on Tuesday. MCX January rubber futures took a breather from the recent fall and posted gains, while RSS4 grade rubber in the spot market continued declining. The underlying market sentiments stayed feeble on lingering worries over demand and prospects of rise in production.



TECHNICAL VIEW

<b>CASTOR NCDEX JAN</b>	If prices unable to trade above 5880 levels could see corrective moves towards 5750/5700 levels.	
<b>GUARSEED NCDEX JAN</b>	A voluminous rise over 6210 is required for more upsides. As long as this range caps, may trade sideways to weak, with support seen at 6075-6045/5940.	
<b>GUARGUM NCDEX JAN</b>	Unless 11360 is breached convincingly upside, may trade sideways to weak, with support seen at 10920/10840/10700.	
<b>RUBBER MCX JAN</b>	Weakness may prevail though pullbacks to 16280/16450 may not be ruled out.	

## OILSEED COMPLEX

## Market Buzz

- Farmers have sown mustard across 8.7 mln ha in the country, up 21.4% on year, in the ongoing 2021-22 (Jul-Jun) rabi season as of Friday, according to the farm ministry's data. The government fixed the minimum support price of the crop at 5,050 rupees per 100 kg for the 2022-23 (Apr-Mar) marketing season, as against 4,650 rupees in the previous year.
- The Centre has included soymeal under the Essential Commodities Act with immediate effect till Jun 30 to regulate production, stocking, and distribution of the commodity.
- The government has reduced the basic import duty on refined, bleached, and deodorised palm oil, to cool domestic prices, the finance ministry said in a notification. The new duty rates will be in place till Mar 31, the ministry said. The effective basic import duty on refined, bleached, and deodorised palm oil has been reduced to 12.5% from 17.5% earlier. With the new duty cut, the duty difference between crude palm oil, which is a raw material, and refined, bleached, and deodorised palm oil, which is the finished product, has reduced to 5.5% from 11.0% earlier.
- The Securities and Exchange Board of India asked exchanges not to launch new contracts of some farm commodities, including those of soybean and its derivatives, and crude palm oil. The restrictions come into effect immediately and shall be applicable for one year.
- India's oilmeal exports fell 51.1% on year to 162,442 tn in November, according to data released by The Solvent Extractors' Association of India. In Apr-Nov, overall exports of oilmeal were at 1.59 mln tn, down 18.2% on year. Soymeal exports fell drastically to 42,951 tn in November compared with 198,776 tn in the same period last year because the Indian variant is priced higher in international markets. In November, mustard meal exports fell about 6.0% on year to 42,383 tn, while exports of castor meal were down nearly 22.5% on year at 28,876 tn.
- The Central Organisation for Oil Industry and Trade has estimated India's mustard output in the 2021-22 (Jul-Jun) rabi season at 10-11 mln tn because of increase in acreage, it said in a release. In 2020-21 the country produced around 8.5 mln tn of mustard, which is a crucial oilseed sown in the rabi season during Sep-Oct and harvested from February.
- India's vegetable oil imports increased 6.4% on year to around 1.17 mln tn in November, according to SEA. For the marketing year ended October, vegetable oil imports were around 13.13 mln tn, lower than 13.17 mln tn during the year-ago period. Frequent changes in import duty over the last few months on edible oils disturbed the import pattern, the association had said earlier. As of Dec 1, 704,000 tn of edible oil was at ports, against 581,000 tn from a year ago, while 950,000 tn in the pipeline against 850,000 tn during the same period last year, the SEA said.
- The soymeal exports in November increased 27.4% on year to 270,000 tn, the Soybean Processors Association of India said in a release. For Oct-Nov, soymeal exports fell to 291,000 tn from 347,000 tn a year ago. Soymeal production fell in November to 559,000 tn from 918,000 tn a year ago, it was at 1.04 mln tn during Oct-Nov, lower than 1.67 mln tn during the same period a year ago. Soybean arrivals in spot markets were lower at 14,000 tn in November compared to 19,000 tn during the same time last year. During Oct-Nov, arrivals fell to 2.9 mln tn from 3.7 mln tn during the same period last year. By the end of November, mills, traders, and farmers were left with around 9.91 mln tn of soybean stock.
- The National Commodity and Derivatives Exchange will not charge transaction fees on GUAREX and SOYDEX futures contracts up to Mar 31, the bourse said in a circular. This is to encourage active participation and market development of index products.
- In its December report, the US Department of Agriculture has estimated global soybean production in 2021-22 at 381.8 mln tn, marginally lower than 384 mln tn pegged the previous month. The decline is mainly attributed to a fall in production in China due to lower area under the oilseed, though the output in Russia and the Ukraine is seen higher. The estimate for global ending stocks for 2021-22 has been scaled down to 102.0 mln tn from 103.8 mln tn the previous month. Similarly, the estimated global soymeal output for 2021-22 has been revised marginally downwards to 257.6 mln tn from 258.5 mln tn, the report said. The estimate for global exports of soymeal has been left largely unchanged at 70.8 mln tn. In the December report, the global soyoil export estimate for 2021-22 has been increased marginally to 12.7 mln tn from 12.6 mln tn estimated the previous month. However, the global soyoil production estimate for 2021-22 has been revised downwards to 61.6 mln tn in December from 61.7 mln tn pegged the previous month. According to the report, global oilseed production in 2021-22 is seen lower at 627.6 mln tn against 628.0 mln tn pegged in November, due to a decline in soybean output in China. Global vegetable oil output in 2021-22 is now seen at nearly 215.0 mln tn, against the estimate of 214.8 mln tn in November.
- The Centre cut basic duty on crude palm oil, crude soybean oil and crude sunflower oil from 2.5% to nil. The agri-cess on these oils has been brought down from 20% to 7.5% for crude palm oil and 5% for crude soybean oil and crude sunflower oil, the Finance Ministry said. The basic duty on RBD Palmolein Oil, Refined Soybean and Refined Sunflower Oil has been slashed to 17.5% from the current 32.5%.
- India's 2020-21 (Jul-Jun) mustard output is seen rising 22.6% on year to 8.95 mln tn, according to a joint survey by the Central Organisation for Oil Industry and Trade and the Mustard Oil Producers' Association.
- The government reduced the effective import duty on CRUDE PALM OIL to 8.25% from 24.75%, and the effective import duty on REFINED SOYOIL to 19.25% from 35.75%.
- India's soybean acreage in the 2021-22 (Jul-Jun) kharif season remained unchanged at 12.2 mln ha, agri ministry.
- The base import tax on crude palm oil has been slashed to 2.5% from 10%, while the tax on crude soyoil and crude sunflower oil has been reduced to 2.5% from 7.5%, the government said in a notification late on Friday. The base import tax on refined grades of palm oil, soyoil and sunflower oil cut to 32.5% from 37.5%. After the cuts, crude palm oil, soyoil and sunflower oil imports will be subject to a 24.75% tax in total, including a 2.5% base import duty and other taxes, while refined grades of palm oil, soyoil and sunflower oil would carry a 35.75% tax in total.
- The government allowed the import of 1.2 mln tn of genetically-modified soymeal till Oct 31 to augment supply in domestic markets, the Directorate General of Foreign Trade said in a notification.
- Malaysia's crude palm oil output fell 5.3% on month to a little over 1.6 mln tn in November, according to data from the Malaysian Palm Oil Board. Persisting labour shortage issue in the country led to the decline in output. Export of palm oil in November increased 3.3% on month to 1.47 mln tn, while outbound shipments of biodiesel sharply increased by 160.2% on month to 49,972 tn. Total palm oil stocks in the country decreased 4.4% on month to around 942,354 tn as on November-end.
- Malaysia's crude palm oil exports during Dec 1-15 were down at 158,650 tn from 302,584 tn the previous month.
- Acreage under oil palm in north-eastern states is likely to increase by 50-60% by 2025 depending on the availability of seedlings, a farm ministry source said.

## TECHNICAL LEVELS

Commodity	Contract	Open*	High*	Low*	Close*	S3	S2	S1	Pivot	R1	R2	R3
<b>SPICES</b>												
Jeera	JanNCDEX	16230	16255	16160	16190	16053	16107	16148	16202	16243	16297	16338
Turmeric	AprNCDEX	9010	9066	8970	9014	8871	8921	8967	9017	9063	9113	9159
Dhaniya	JanNCDEX	8630	8630	8452	8584	8303	8377	8481	8555	8659	8733	8837
Menthaoil	DecMCX	981.0	995.0	981.0	988.2	967	974	981	988	995	1002	1009
<b>PULSES</b>												
Chana	JanNCDEX	4693	4693	4693	4693	4693	4693	4693	4693	4693	4693	4693
Guarseed	JanNCDEX	6109	6157	6092	6116	6021	6057	6086	6122	6151	6187	6216
Guargum	JanNCDEX	11077	11179	11006	11068	10817	10911	10990	11084	11163	11257	11336
<b>OIL &amp; OIL SEEDS</b>												
Soybean	JanNCDEX	6324	6450	6280	6398	6132	6206	6302	6376	6472	6546	6642
RM seed	JanNCDEX	7650	7650	7650	7650	7650	7650	7650	7650	7650	7650	7650
CPO	DecMCX	1084	1090	1084	1089	1080	1082	1086	1088	1092	1094	1098
Soyoil	JanNCDEX	1171	1182	1170	1181	1162	1170	1174	1178	1186	1186	1197
Castor seed	JanNCDEX	5848	5878	5754	5806	5623	5754	5747	5813	5871	5937	5995
<b>CEREALS</b>												
Wheat	JanNCDEX	2106	2106	2106	2106	2106	2106	2106	2106	2106	2106	2106
Barley	JanNCDEX	2403	2403	2403	2403	2403	2403	2403	2403	2403	2403	2403
<b>OTHERS</b>												
Cocud^	JanNCDEX	2930	2990	2920	2983	2869	2894	2939	2964	3009	3034	3079
Kapas	Apr22 NCDEX	1912.0	1930.0	1901.5	1917.5	1874	1888	1903	1916	1931	1945	1960
Cotton	DecMCX	33090	33590	33090	33430	32650	32870	33150	33370	33650	33870	34150
Rubber	JanMCX	16100	16222	16100	16182	15992	16046	16114	16168	16236	16290	16358

Pivot Point: A predictive indicator of the market which is calculated as an average of significant prices from the performance of a market in the prior trading period. An open above the pivot point is generally considered bullish and vice versa.  
 S1, S2 & S3 are supports and R1, R2, and R3 are resistances from where a turnaround can be anticipated.  
 \*Open, High, Low and Close prices of previous trading day / ^Cottonseed Oil Cake



Strong bias or bullish



Choppy or Sideways



Weak bias or bearish



Mild bullish bias



Mild bearish bias

## TRADING SIGNALS

Commodities	Intraday	Overall	Volatility		Short term		Medium term		Long term	
	View	View	1 day	Annualised	3 day EMA	5 day EMA	13 day EMA	22 day EMA	45 day EMA	60 day EMA
Pepper Jan ICEX	FLAT/CHOPPY	POSITIVE	0.83%	13.2%	FLAT	FLAT	POSITIVE	POSITIVE	POSITIVE	POSITIVE
Jeera Jan NCDEX	POSITIVE	POSITIVE	1.09%	17.3%	POSITIVE	FLAT	NEGATIVE	POSITIVE	POSITIVE	POSITIVE
Turmeric Apr NCDEX	NEGATIVE	FLAT/CHOPPY	2.05%	32.6%	NEGATIVE	NEGATIVE	NEGATIVE	POSITIVE	POSITIVE	POSITIVE
Dhaniya Jan NCDEX	POSITIVE	FLAT/CHOPPY	1.31%	20.8%	POSITIVE	POSITIVE	NEGATIVE	NEGATIVE	NEGATIVE	POSITIVE
Chana Jan NCDEX	NEGATIVE	HIGHLY NEGATIVE	0.76%	12.1%	NEGATIVE	NEGATIVE	NEGATIVE	NEGATIVE	NEGATIVE	NEGATIVE
Guarseed10 Jan NCDEX	FLAT/CHOPPY	FLAT/CHOPPY	1.90%		POSITIVE	NEGATIVE	POSITIVE	POSITIVE	NEGATIVE	NEGATIVE
Guargum Jan NCDEX	POSITIVE	POSITIVE	2.78%	44.1%	POSITIVE	POSITIVE	POSITIVE	POSITIVE	NEGATIVE	NEGATIVE
Soybean Jan NCDEX	POSITIVE	HIGHLY POSITIVE	2.79%	44.2%	POSITIVE	POSITIVE	POSITIVE	POSITIVE	POSITIVE	POSITIVE
Ref. Soyoil Jan NCDEX	POSITIVE	POSITIVE	1.13%	17.9%	POSITIVE	POSITIVE	POSITIVE	POSITIVE	NEGATIVE	NEGATIVE
RMseed Jan NCDEX	POSITIVE	NEGATIVE	1.60%	25.3%	POSITIVE	POSITIVE	NEGATIVE	NEGATIVE	NEGATIVE	NEGATIVE
CPO Jan MCX	POSITIVE	FLAT/CHOPPY	0.86%	13.6%	POSITIVE	POSITIVE	POSITIVE	NEGATIVE	NEGATIVE	NEGATIVE
Castor Jan NCDEX	NEGATIVE	HIGHLY NEGATIVE	1.36%	21.5%	NEGATIVE	NEGATIVE	NEGATIVE	NEGATIVE	NEGATIVE	NEGATIVE
Kapas22 Apr NCDEX	POSITIVE	HIGHLY POSITIVE	1.33%	21.1%	POSITIVE	POSITIVE	POSITIVE	POSITIVE	POSITIVE	POSITIVE
Cotton Jan MCX	POSITIVE	HIGHLY POSITIVE	1.40%	22.3%	POSITIVE	POSITIVE	POSITIVE	POSITIVE	POSITIVE	POSITIVE
Cocudakl Jan NCDEX	POSITIVE	HIGHLY POSITIVE	1.33%	21.0%	POSITIVE	POSITIVE	POSITIVE	POSITIVE	POSITIVE	POSITIVE
Wheat Jan NCDEX	NEGATIVE	NEGATIVE	0.41%	6.5%	FLAT	NEGATIVE	NEGATIVE	NEGATIVE	NEGATIVE	NEGATIVE
Barley Jan NCDEX	NEGATIVE	POSITIVE	0.29%	4.6%	NEGATIVE	NEGATIVE	POSITIVE	POSITIVE	POSITIVE	POSITIVE
Menthaoil Jan MCX	POSITIVE	HIGHLY POSITIVE	0.85%	13.6%	POSITIVE	POSITIVE	POSITIVE	POSITIVE	POSITIVE	POSITIVE
Rubber Jan MCX	FLAT/CHOPPY	NEGATIVE	1.46%	23.1%	POSITIVE	NEGATIVE	NEGATIVE	NEGATIVE	NEGATIVE	NEGATIVE

Trading signals is prepared based on statistical analysis and is purely on technical indicators like exponential moving averages (EMAs), Relative strength Index (RSI) and stochastic, putting altogether provides an idea about intraday, short, medium and long term trend of the commodities. It also signals the risk of an investment in both agricultural and global commodities as well. Based on all listed indicators above, investors were able to fix a daily, near-term and long term trends. However, must be cautious especially for real-time intraday traders/jobbers.

### Trading Strategy based on EMA

Trading strategies mentioned in the report is mainly based on 3, 5, 13, 22, 45 & 60 days exponential Moving Averages. 3 and 5 day EMA has taken for developing Intraday trading strategy, 13 days and 22 days EMA for Short term and Medium term, while 45,60 days EMA for Long term. Here, we use EMAs for POSITIVE and NEGATIVE signals. POSITIVE signal is formed when a short-term moving average (eg: 30 day) crosses from below a longer-term average (eg: 60 day), which is considered bullish. Likewise, NEGATIVE signal is formed when a short-term moving average (eg: 30 day) crosses from above a longer-term moving average (eg: 60 day), which is considered bearish.

**Intraday and Overall view** The section is consist of both Intraday and Overall view. The Intraday view is calculated by netting out of POSITIVES/NEGATIVES/FLAT signals formed in the short term trend. On the another part, Overall view is calculated by netting out number of POSITIVES/NEGATIVES/FLAT signals formed in the short, Medium and long term trend.

**Volatility** is a measure for dispersion of price of a financial instrument over a period of time by using Standard deviation and annualised actual volatility. Standard deviation is used to calculate one day volatility. Whereas, Annualized Actual Volatility (AAV) is measured as annualized standard deviation of the continuously compounded daily returns of the asset. Generally the thumb rule is that, higher the volatility higher the risk of the asset. See the table below the range risk ratings.

Annualised Volatility >	Risk %	Ratings	Risk %	Ratings	Risk %	Ratings	Risk %	Ratings	Risk %	Ratings
> 35%	> 35%	Very High risk	27 to 34%	High risk	20 to 26%	Moderate risk	11 to 19%	Low risk	1 to 10%	Very Low risk



## GENERAL DISCLOSURES & DISCLAIMERS:

### CERTIFICATION

I, Vinod T P, employee of Geojit Financial Services Limited (GFSL), author of this report, hereby certify that all the views expressed in this research report (report) reflect my/ our personal views about any or all of the subject issuer or securities/ commodities.

### DISCLAIMER

This report has been prepared by GFSL and the report & its contents are the exclusive property of GFSL and the recipient cannot tamper with the report or its contents in any manner and the said report, shall in no case, be further distributed to any third party for commercial use, with or without consideration.

GFSL has taken steps to ensure that facts in this report are based on reliable information but cannot testify, nor make any representation or warranty, express or implied, to the accuracy, contents or data contained within this report. It is hereby confirmed that wherever GFSL has employed a rating system in this report, the rating system has been clearly defined including the time horizon and benchmarks on which the rating is based.

Descriptions of any Commodity or Commodities mentioned herein are not intended to be complete and this report is not, and should not be construed as an offer or solicitation of an offer, to buy or sell any commodity or other financial instruments. GFSL has not taken any steps to ensure that the commodity/(ies) referred to in this report are suitable for any particular investor. This Report is not to be relied upon in substitution for the exercise of independent judgment. Opinions or estimates expressed are current opinions as of the original publication date appearing on this Report and the information, including the opinions and estimates contained herein, are subject to change without notice. GFSL is under no duty to update this report from time to time.

### RISK DISCLOSURE

Geojit Financial Services Limited and/or its Affiliates and its officers, directors and employees including the analyst/authors shall not be in any way be responsible for any loss or damage that may arise to any person from any inadvertent error in the information contained in this report. Investors may lose his/her entire investment under certain market conditions so before acting on any advice or recommendation in these material, investors should consider whether it is suitable for their particular circumstances and, if necessary, seek professional advice. This report does not take into account the specific investment objectives, financial situation/circumstances and the particular needs of any specific person who may receive this document. The user assumes the entire risk of any use made of this information. Each recipient of this report should make such investigation as it deems necessary to arrive at an independent evaluation of an investment in the Commodity/(ies) referred to in this report (including the merits and risks involved). The price, volume and income of the investments referred to in this report may fluctuate and investors may realize losses that may exceed their original capital.

The investments or services contained or referred to in this report may not be suitable for all equally and it is recommended that an independent investment advisor be consulted. In addition, nothing in this report constitutes investment, legal, accounting or tax advice or a representation that any investment or strategy is suitable or appropriate to individual circumstances or otherwise constitutes a personal recommendation of GFSL.

### REGULATORY DISCLOSURES:

Geojit Financial Services Limited's Associates consists of companies such as Geojit Technologies Private Limited (GTPL- Software Solutions provider), Geojit Credits Private Limited (GCPL- NBFC Services provider), Geojit Investment Services Limited (GISL- Corporate Agent for Insurance products), Geojit Financial Management Services Private Limited (GFMSL) & Geojit Financial Distribution Private Limited (GFDPL), (Distributors of Insurance and MF Units). In the context of the SEBI Regulations on Research Analysts (2014), Geojit Financial Services Limited affirms that we are a SEBI registered Research Entity and we issue research reports /research analysis etc that are prepared by our Research Analysts. We also affirm and undertake that no disciplinary action has been taken against us or our Analysts in connection with our business activities.

In compliance with the above mentioned SEBI Regulations, the following additional disclosures are also provided which may be considered by the reader before making an investment decision:

#### 1. Disclosures regarding Ownership:

GFSL confirms that:

It/its associates have no financial interest or any other material conflict in relation to the subject Commodity futures covered herein at the time of publication of this report.

Further, the Research Analyst confirms that:

He, his associates and his relatives have no financial interest in the subject Commodity futures covered herein, and they have no other material conflict in the subject Commodity at the time of publication of this report.

#### 2. Disclosures regarding Compensation:

During the past 12 months, GFSL or its Associates have not received any compensation or other benefits from any entity/ third party in connection with the Commodity futures mentioned in this report.

#### 3. Disclosure regarding the Research Analyst's connection with the Commodity futures:

It is affirmed that I, Vinod T P employed as Research Analysts by GFSL and engaged in the preparation of this report have no substantial ownership or financial interest over any Commodity futures mentioned in the report.

#### 4. Disclosure regarding Market Making activity:

Neither GFSL nor its Research Analysts have engaged in market making activities for the subject Commodity futures.

Copyright in this report vests exclusively with GFSL

Geojit Financial Services Ltd., 34/659-P, Civil Line Road, Padivattom, Kochi - 682024  
Toll-Free Number: 1800-425-5501 / 1800-103-5501, Paid Number: 91 - 484 - 2901000  
Research Entity SEBI Registration Number: INH200000345  
Email id: customercare@geojit.com, Web: www.geojit.com

**SEBI Stock Broker Registration No INZ000104737, Research Entity SEBI Reg No: INH200000345, Investment Adviser SEBI Reg No: INA200002817, Portfolio Manager:INP000003203, SEBI Registration No. Stock Broker: INZ000104737 / Depository Participant: IN-DP-325-2017, ARN Regn.Nos:0098, IRDA Corporate Agent (Composite) No.: CA0226.**