



GEOJIT
PEOPLE YOU PROSPER WITH

AGRI PICKS

A Daily Report on Agricultural Commodities

Friday, November 20, 2020

TODAY'S PICKS

BUY COCDUAKL ON DIPS

AGRI BUZZ

- The National Agricultural Cooperative Marketing Federation of India has offloaded nearly all of its onion stocks and may replenish its buffer from April, an official with the agency said.
- The Centre is likely to ask some northern states, particularly Punjab and Haryana, to create more temporary storage space under the 'covered and plinth' category to move out wheat in the central pool and make more space available for rice, senior government officials said.
- The National Agricultural Cooperative Marketing Federation of India has bought around 3,865 tn of key pulses harvested in the 2020-21 (Jul-Jun) kharif season in Tamil Nadu, Maharashtra, Rajasthan and Haryana as of Tuesday, an official with the agency said.
- India's oilmeal exports jumped nearly 33% on year to 317,394 tn in October, according to data released today by The Solvent Extractors' Association of India.
- The water level in 123 key reservoirs across the country was at 82% of the total storage capacity, according to data released by the Central Water Commission.
- The Indian economy will see a negative nominal growth rate in 2020-21 (Apr-Mar), 15th Finance Commission Chairman N.K. Singh said.
- Sowing of rabi crops has started across the country, with farmers planting such crops over 18.5 mln ha as of Friday, 21% higher than a year ago, according to farm ministry data.

	Futures	Spot
Contract/spot	JEERA - NOV20	Unjha
Rate	14065	14060
% chg	-0.04	-0.01
1 week low	13790	14020
1 week High	14070	14060
	Futures	Spot
Contract/spot	CHANA - NOV20	Bikaner
Rate	5125	5077.15
% chg	-1.84	-0.55
1 week low	5125	5077.15
1 week High	5280	5146.35
	Futures	Spot
Contract/spot	SOYABEAN - NOV20	Indore
Rate	4494	4568
% chg	0.38	1.29
1 week low	4450	4507
1 week High	4561	4576
	Futures	Spot
Contract/spot	CASTOR SEED -	Deesa
Rate	4690	4700
% chg	2.36	1.11
1 week low	4580	4700
1 week High	4774	4700
	Futures	Spot
Contract/spot	RUBBER - DEC20	Kottayam
Rate	15578	15650
% chg	0	0.32
1 week low	15525	0
1 week High	15725	0

	Futures	Spot
Contract/spot	TURMERIC - NOV20	Nizamabad
Rate	5698	5616.65
% chg	-0.11	0.18
1 week low	5662	5606.5
1 week High	5768	5625
	Futures	Spot
Contract/spot	GUAR SEED10 - NOV20	Jodhpur
Rate	4070	4070
% chg	0.62	0.8
1 week low	4030	4010
1 week High	4120	4070
	Futures	Spot
Contract/spot	REFINED SOYA OIL - NOV20	Kandla
Rate	1076	1085
% chg	0.21	2.11
1 week low	1055	1062.55
1 week High	1085	1087.45
	Futures	Spot
Contract/spot	KAPAS - NOV20	Rajkot
Rate	1085	1095.3
% chg	-0.05	1.04
1 week low	1085	1092.9
1 week High	1096.5	1095.3
	Futures	Spot
Contract/spot	MAIZE - Feed/Industrial Grade	Gulabbagh
Rate	0	1450
% chg	0	0
1 week low	0	1450
1 week High	0	1450





	Futures	Spot
Contract/spot	CORIANDER - NOV20	Kota
Rate	6558	6575.65
% chg	-0.3	0.41
1 week low	6500	6548.9
1 week High	6610	6621.95
	Futures	Spot
Contract/spot	Guar Gum Refined Splits - NOV20	Jodhpur
Rate	6150	6250
% chg	-0.84	0.81
1 week low	6150	6191.65
1 week High	6322	6350
	Futures	Spot
Contract/spot	RAPE MUSTARD SEEDS - NOV20	Jaipur
Rate	6141	6334.7
% chg	0.13	0.32
1 week low	6104	6311.75
1 week High	6190	6350
	Futures	Spot
Contract/spot	COTTON SEED OIL	AKOLA
Rate	2018	1986
% chg	3.91	1.37
1 week low	1925	1959.15
1 week High	2019	1988.6
	Futures	Spot
Contract/spot	BARLEY - NOV20	Jaipur
Rate	1416.5	0
% chg	0	0
1 week low	1400	0
1 week High	1451	0

SPICES COMPLEX

Market Buzz

- Jeera December futures on NCDEX bounced back from the one month lows on Thursday, gaining nearly one per cent.
- Spices Board pegs Apr-Aug jeera exports at 133000 tonnes, up by 30 per cent on yoy basis.
- Exports of jeera were at 210,000 tn, up 16% from 180,300 tn in 2018-19 according to the Spices Board.
- According to the Spices Board, jeera production for the year 2019-20 is pegged at 540750 tonnes, down 21.8 per cent on yoy basis.
- Dhaniya December futures on NCDEX varied in thin ranges and ended flat on Thursday.
- According to Spices Board of India data, coriander exports for the Apr-Aug period this year is seen at 22750 tonnes, up by 14 per cent on yoy basis.
- Coriander exports from India were up 3% on year at 50,250 tn in the last financial year according to the Spices Board.
- Spices Board has forecast coriander production at 755,740 tn, up 25.9% on year due to a sharp rise in acreage.
- Turmeric December futures on NCDEX inched up on Thursday after previous day's fall.
- Spices Board pegs turmeric export from India for the period Apr-Aug this year at 79000 tonnes, up by per cent year on.
- Concerned over the fall in area under turmeric, the Parliamentary Standing Committee on Commerce has recommended the government to take immediate measures like implementing minimum support price to encourage farmers.
- India exported 136,000 tn of turmeric in 2019-20, up 2% on year according to the Spices Board.
- India exported 1300 tonnes of small cardamom for the period Apr-Aug, up by 225 per cent year on according to the data from the Spices Board.
- According to the Spices Board, exports of small cardamom fell 27% on year in terms of volume but rose 20% in value terms.
- Spices Board pegs '19-20 small cardamom crop at 11,230 tn, dn 13.2%



<p>JEERA NCDEX DEC</p>	<p>May stretch the witnessing bounce back towards 14200 or even more to 14300. However, a voluminous rise above 14420 is required for the weakness to lessen. Inability to clear the same may call for a range bound move inside 13800-14400.</p>	
<p>DHANIYA NCDEX DEC</p>	<p>May vary inside 6500-6760 and a voluminous breakout from either the sides could lend fresh direction for the day.</p>	
<p>TURMERIC NCDEX DEC</p>	<p>Pullbacks to 5760 ranges may not be ruled out before resuming declining. However, an unexpected rise above 5850 may call for more short covering.</p>	
<p>CARDAMOM MCX DEC</p>	<p>Choppy to weak trades expected.</p>	

OILSEED COMPLEX

Market Buzz

- Except soybean all commodities in the edible oil in complex settled the day in a weak note. MCX Nov CPO prices hit a fresh all time high but could not able to sustain the level and later triggered profit booking on weakness in BMD Malaysian palm oil prices. Dec Soy oil prices also rose initially and hit fresh record highs and later it could not sustain the region due to profit booking amid lower stocks in the physical markets.
- NCDEX Dec Soybean continued to stay higher due to robust export demand for soymeal from India. Dec Mustard seed futures settled the day in weak note on expectation of bumper crops due to higher mustard seed acreage during this rabi season.
- India's vegetable oil imports plunged nearly 8% on year to 1.27 mln tn in October, according to SEA. For the year ended October, vegetable oil imports were around 13.5 mln tn, lower than 15.6 mln tn during the year-ago period. The country imported over 1.2 mln tn edible oil in October against 1.3 mln tn during same period last year. The domestic refining capacity utilisation improved to 55-60% during 2019-20 from 40-45% a year ago due to stoppage of the import of refined bleached deodorised palmolien. Imports of refined edible oils fell sharply to 421,000 tn in 2019-20 against 2.73 mln tn last year while crude edible oil imports rose to 1.28 mln tn compared to 1.22 mln tn last year. During 2019-20, palm oil import fell sharply to 7.22 mln tn compared to 9.41 mln tn last year due to 5% safeguard duty and later placing refined bleached deodorised palmolien in restricted list. The move has encouraged the import of soft edible oils like soyoil, sunflower oil, and mustard oil, which rose to 5.96 mln tn from 5.53 mln tn last year. As on Nov 1, 558,000 tn of edible oil was at ports, against 1.19 mln tn from a year ago, while 1.02 mln tn in the pipeline against 590,000 tn during same period last year.
- India's soymeal exports in October nearly doubled on year to 125,000 tn, according to The Soybean Processors Association of India. Domestic consumption of soymeal for food segment was estimated at 50,000 tn in October, largely unchanged from a year ago period, while in feed segment, domestic consumption was pegged at 450,000 tn, against 525,000 tn estimated for the previous year. The association said that 825,000 tn of soybean was crushed in October, as against 720,000 tn last year. Higher crushing is due to a rise in arrival of new crop in spot markets. Soybean arrivals in spot markets were 1.3 mln tn in October against 1.2 mln tn in the year-ago period. By the end of October, soybean stocks left with plants, traders, and farmers are around 9.02 mln tn.
- The US Department of Agriculture has cut its estimate for global oilseed production for 2020-21 to 597.28 mln tn from 605.50 mln tn projected in October. The agency, also cut its estimate for ending stocks to 98.57 mln tn from 101.18 mln tn. Global consumption of oilseeds is also likely to fall to 511.15 mln tn from 514.80 mln tn pegged in October. The agency has cut its estimate for global soybean output to 362.64 mln tn from 368.47 mln tn. Soybean output during 2020-21 is likely to fall as production declined in the US, the second-largest grower. The agency has pegged the US crop at 113.50 mln tn against 116.15 mln tn projected in October. Production estimate of the oilseed in Brazil has been retained at 133 mln tn. Global ending stocks of soybean are seen falling to 86.5 mln tn from 88.70 mln tn estimated last month.
- According to Mustard oil processors association, crushing of mustard seeds by mills in India rose 20% on year to 600,000 tn in October.
- According to state government reports, area under mustard in Rajasthan surged 48.4% on year to around 1.4 mln ha as of Wednesday due to ample rain this year.
- India's oilmeal exports more than doubled on year to 286,957 tn in September, as per data released the Solvent Extractors' Association of India. This year's exports were 103% higher than 141,184 tn shipped in September last year. Soymeal exports rose to 68,576 tn from 35,268 tn a year ago and mustard meal exports surged 140,830 tn from 51,132 tn, according to SEA.
- The area under major kharif crops so far in 2020-21 (Jul-Jun) was at 111.7 mln ha, up nearly 5% from a year ago, farm ministry data showed. The area under soybean across the country rose 6.4% on year to 12.12 mln ha as of 24th Sep, according to data from the farm ministry. The Union Cabinet approved a hike in minimum support price for 14 major kharif crops. MSP for soybean hiked by Rs.170 to 3880 from 3710 per 100 kg. Soybean output is estimated at 12.2 mln tn in 2019-20, according to the farm ministry's fourth advance estimate. The Soybean Processors Association of India has cut its estimate for India's soybean output in 2020-21 (Jul-Jun) to 10.5 mln tn from its previous projection of 12.2 mln tn. Soybean production is estimated 21.4% higher on year to 13.6 mln tn, according to the farm ministry data.
- Crushing of mustard seeds by mills in the country surged 18.2% on year to 650,000 tn in September, data from the Mustard Oil Producers Association of India. As of February-end, carryover stocks were at 500,000 tn. Stocks with farmers, processors, stockists and state-run agencies were at around 2.2 mln tn as on Sep 30, compared with 3.3 mln tn a year ago. According to the association, mustard output was at 7.6 mln tn in 2019-20 (Jul-Jun), compared with 8.1 mln tn the previous year.
- India is likely to grow a record 10 mln tn mustard crop in 2020-21 (Jul-Jun), mainly due to the likelihood of a sharp rise in acreage, according to Solvent Extractors' Association of India. The government has targeted an all-time high crop of 12.5 mln tn for this rabi season.
- Farmers in India have sown castor seed across 774,300 ha, down 15% from a year ago, farm ministry data showed. A year ago, castor seed acreage was at 910,000 haAccording to Government final estimate, castor production in 2019-20 is lower by 15,000 tonnes compared to 2 million tones a year ago.
- India's castor oil exports rose 26.4% on year to 65,682 tn in July, according to Solvent Extractors' Association of India data. Exports were 51,962 tn in the year-ago period. For Apr-Jul, exports of the commodity were at 195,478 tn compared with 198,440 tn during the year-ago period. In 2019-20 (Apr-Mar), India's castor oil exports slipped to 539,962 tn from 571,985 tn in 2018-19, the association said.
- India's India July castor meal exports fell by 41% at 22,786 tn compared from 38,437 tn a yr ago. Overall exports also fell by 62% during Apr-July to 85,607 tones.
- Malaysia's crude palm oil output fell 7.7% on month to 1.72 mln tn in October, according to Malaysian Palm Oil Board. Total palm oil stocks fell 8.6% on month to 1.57 mln tn. Malaysia's palm oil exports in October were up 3.8% on month at 1.67 mln tn and biodiesel exports fell 42.6% on month to 22,609 tn.
- According to AmSpec Agri Malaysia, exports of Malaysian palm oil for the period Nov. 1-15 fell by 11.75% to 673,991 tonnes from 763,772 tonnes.



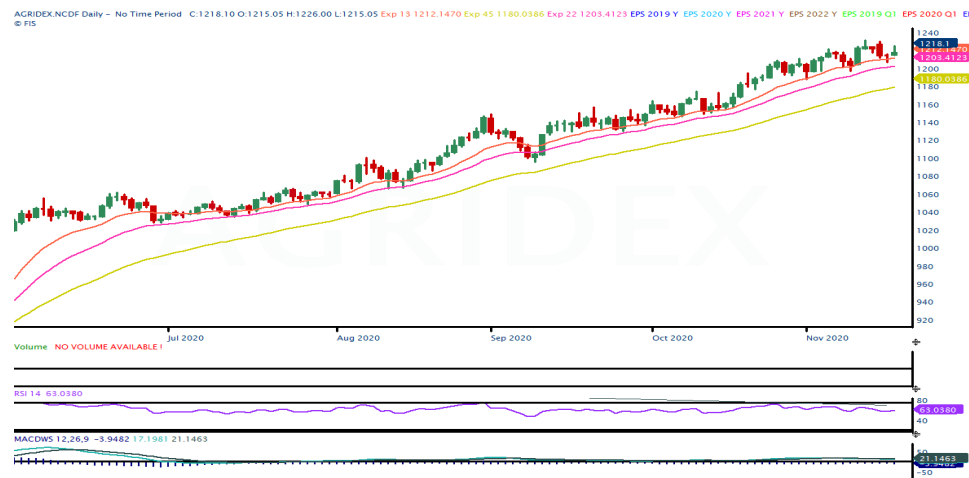
TECHNICAL VIEW

SOYBEAN NCDEX DEC	As long as prices stays above 4450 could see bargain buying towards 4500/4530 levels.	
REF SOY OIL NCDEX DEC	Though profit booking witnessed yesterday sustain to trade above 1062 expect pullbacks to 1075/1080 levels.	
RMSEED NCDEX DEC	Sustain to trade above 6160 could see pullbacks to 6230 levels. Else, see a major corrective moves to 6130/6100 levels.	
CASTOR NCDEX NOV	Choppy trading session is more expected for the day.	
CPO MCX NOV	Though profit booking witnessed yesterday sustain to trade above 920 expect pullbacks to 940/945 levels. Else, could see a profit booking.	

COTTON COMPLEX

Market Buzz

- The US Department of Agriculture has cut its estimate for global cotton output for 2020-21 to 116.1 mln bales (1 US bale = 218 kg) from 116.3 mln bales projected in October. The agency has retained its output estimate for India at 30.0 mln bales. India is the world largest producer of cotton. The agency maintained its estimates for India's cotton exports and ending stocks at 5.0 mln bales and 20.9 mln bales, respectively. Domestic demand is seen steady at 23.0 mln bales. Globally, the output is likely to fall as production is expected to decline in Pakistan. Global cotton consumption is seen at 114.1 mln tn, marginally down from 114.2 mln bales projected last month. Global exports for 2020-21 are now seen at 42.9 mln bales, compared with 42.2 mln bales estimated a month ago. Ending stocks are seen higher at 101.4 mln bales against 101.1 mln bales, the report said. The agency has kept its estimate for output in the US largely steady at 17.09 mln bales.
- The much awaited and long delayed export agreement between Cotton Corp of India and Bangladesh government is now in its final stage and may materialise by December, said Pradeep Agarwal, chairman and managing director of the organisation.
- The Cotton Association of India has estimated the output of the fibre in India for the 2020-21 (Oct-Sep) season at 35.6 mln bales, down a mere 1% from its projection the previous year. This is on account of reports of crop damage in some pockets due to excess rain and pink bollworm infestation. Farmers have sown cotton across 12.9 mln ha in 2020-21, up 2% from the previous year. In 2019-20, the association had pegged the crop at 36 mln bales. Domestic consumption is estimated at 33 mln bales in 2020-21, compared with 25 mln bales the previous year. Exports are seen at 6 mln bales, against 5 mln bales in 2019-20. The association has pegged imports at 1.40 mln bales, as against 1.55 mln bales the previous year. Carryover stocks in the country for the 2020-21 season are seen at 8.75 mln bales, compared with 10.75 mln bales projected the previous year.
- The International Cotton Advisory Committee has raised its forecast for global prices in 2020-21 (Aug-Jul) as estimates show signs of recovery in consumption, according to its November report. It has estimated global consumption in 2020-21 at 24.4 mln tn, compared with the 22.8 mln tn projected in the previous year. Global production is seen at 25.0 mln tn, compared with 26.1 mln tn estimated a year ago. The lower production estimate is largely attributed to a considerable reduction in output in the US, Pakistan and Brazil. Meanwhile, production in India and China is projected to increase. Cotton production in the US, among the major producers, is seen falling to 3.7 mln tn in the 2020-21 season, compared with 4.3 mln tn projected last year. India is likely to produce 6.2 mln tn, compared with 6.1 mln tn the previous year. Global ending stocks of the fibre are estimated at 22.4 mln tn, as against 21.7 mln tn projected a year ago. The committee has also raised its estimate for global cotton exports for the ongoing season to 9.3 mln tn, compared with 8.9 mln tn projected in the previous year.
- The USDA has marginally cut its estimate for India's cotton crop in to 29.3 mln bales (1 US bale = 218 kg) in 2020-21 (Aug-Jul) from 29.4 mln bales projected in September. The average yield of cotton in India is seen at 491 kg per ha from 492 kg projected in the previous month. The agency scaled up its estimate for India's cotton consumption to 22.7 mln bales as against 22.5 mln bales projected in September due to improved export orders. Exports are projected at 4.7 mln bales in the current season, while imports are seen at 1.0 mln bales. In 2020-21, the closing stock of cotton is pegged at 20.6 mln bales compared with 21.3 mln bales projected in September.
- The UK-based Cotton Outlook has marginally scaled down its estimate for global output of the fibre in 2020-21 (Aug-Jul) to 24.4 mln tn from 24.5 mln tn projected last month, the agency said in its October report. Global cotton consumption in 2020-21 is estimated at 24.0 mln tn, against 23.4 mln tn projected the previous month. Ending stocks of the fibre for 2020-21 are seen at 353,000 tn, against 1.1 mln tn projected last month.
- The area under major kharif crops so far in 2020-21 (Jul-Jun) was at 111.7 mln ha, up nearly 5% from a year ago, farm ministry data showed. Farmers have sown cotton across 13.04 mln ha in the 2020-21 (Jul-Jun) season, up by 2.1% from a year ago, as of 25th Sept., farm ministry.
- India's cotton output in the 2020-21 (Oct-Sep) marketing year is seen at 38.0 mln bales (1 bale = 170 kg), up 4% on year, according to traders. Govt pegs 2020-21 cotton crop at 37.1 mln bales vs 35.5 mln bales.
- Cotton production in Gujarat is likely to fall by 6% to 8.2 mln bales in 2020-21 (Jul-Jun) due to a sharp fall in acreage, according to the first advance estimates released by the state's farm department. Cotton acreage in Gujarat is down at 2.28 mln ha in the current season compared with 2.65 mln ha last year. The fall in sowing area is mainly due to the shift to other lucrative crops like groundnut.
- Govt cuts 2019-20 cotton output view to 35.5 mln bales vs 36.0 mln.
- India's cotton exports are expected to touch 6.0 mln bales (1 bale = 170 kg) in the current marketing year 2019-20 (Oct-Sep) due to strong demand and lower domestic prices, which have made foreign sales economically viable, trade officials said.
- The government has raised the support price of medium staple cotton by 260 rupees per 100 kg to 5,515 rupees, and that of long staple by 275 rupees to 5,825 rupees.



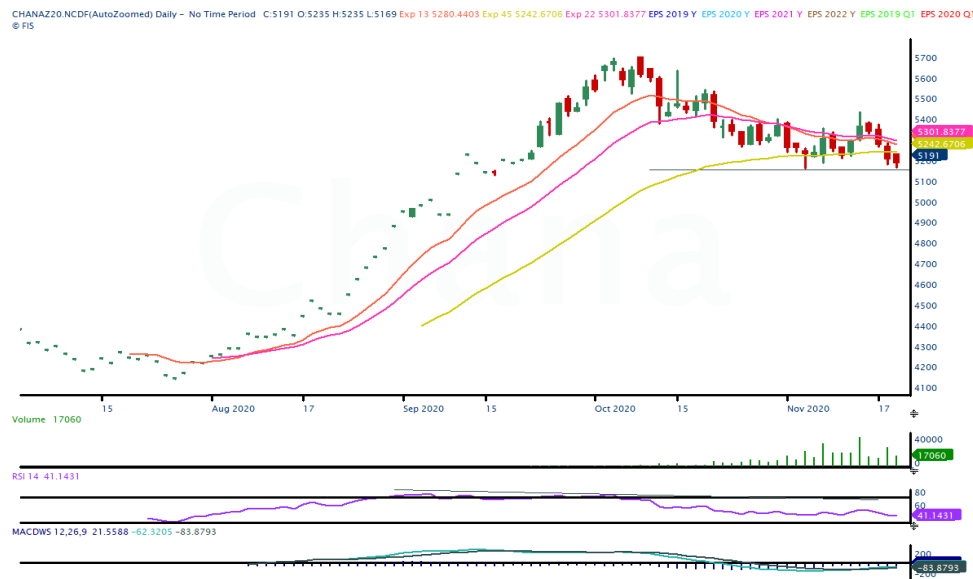
TECHNICAL VIEW

<p>AGRIDEX NCDEX</p>	<p>If prices sustain to trade above 1204 could see pull-backs to 1230/1235 levels.</p>	
<p>KAPAS NCDEX APR21</p>	<p>Upside momentum is more likely to continue further towards 1200/1210 levels, if prices holds the support of 1180 levels.</p>	
<p>COTTON MCX NOV</p>	<p>If prices sustain to trade above 19900 expect to see pullbacks to 20100/20200 levels.</p>	
<p>COCUDAKL NCDEX DEC</p>	<p>As Prices cleared the resistance of 1970, sentiments largely positive and expect more upside moves targeting 2030/2050 levels.</p>	

OTHERS

Market Buzz

- Farmers in the country have sown rabi chana across 2.5 million hectares, up 43.6 per cent on year, as of last Wednesday, farm ministry data showed.
- After offloading 75% of the 2.8 mln tn of chana procured under the under price support scheme in 2020-21 (Apr-Mar) marketing season, the National Agricultural Cooperative Federation of India is likely to wait till prices rise before disposing off the remaining 25%, an official with the agency said.
- The government raised chana MSP by Rs.225 to Rs.5100/100kg.
- Govt. sets chana 2020-21 crop at 11.0 million tonnes from 11.4 million tonnes in 2019-20.
- Export of guar gum have rose in the month of Sep-20 by 8.21 percent compared to previous month. India exported around 13879 tonnes of guar gum at an average FoB of \$ 1708 per tonne in the month of Sep-20 compared to 12826 tonnes in Aug-20 at an average FoB of \$ 1823 per tonne. Exports are expected to increase in Oct-20 in expectation of good demand in overseas market.
- Export of guar split have fell in the month of Sep-20. Exports in the month of Sep-20 are down by around 5.32% compared to previous month. India exported around 625 tonnes of guar split in the month of Sep-20 at an average FoB of \$ 950 per tonne compared to 660 tonnes in Aug20 at an average FoB of \$ 1117 per tonne.
- India's natural rubber production was at 52,000 tn in July, compared with 60,000 tn in the same period a year ago, Rubber Board said in its September report. For, Apr-Jul, the total output was down 26.8% on year at 134,000 tn.
- According to ANRPC, The world production of natural rubber (NR) fell 8.7%, year-over-year, during Jan-Aug 2020 to 7.778 million tonnes. Accounting a 3.8% fall anticipated in the remaining four months of the year, the total production during the full year 2020 is anticipated at 12.901 million tonnes reflecting a 6.8% fall from the previous year. The world consumption of NR fell 11.7%, year-over-year, to 8.151 million tonnes during Jan-Aug 2020. In view of restoration of economic activities across countries, and a faster-than expected economic recovery in China, the consumption sector is anticipated to perform relatively better during the remaining four months of the year by contracting only by 1.8%, year-over-year during the period. The world consumption outlook for the full year 2020 is marginally scaled up to 12.611 million tonnes by representing an 8.4% fall from the previous year .



TECHNICAL VIEW

CHANA NCDEX DEC	May trade sideways to weak as long as 4285 is breached convincingly upside. And, on the downside, sustained trades below 5165 may call for 5135/5100 or more.	
GUARSEED NCDEX DEC	May trade sideways to weak as long as 4180 is breached convincingly upside.	
GUARGUM NCDEX DEC	Higher level selling likely as long as 6350 is breached convincingly upside.	
RUBBER ICEX NOV	May trade firm.	

TECHNICAL LEVELS

Commodity	Contract	Open*	High*	Low*	Close*	S3	S2	S1	Pivot	R1	R2	R3
SPICES												
Jeera	DecNCDEX	13955	14130	13880	14090	13687	13783	13937	14033	14187	14283	14437
Turmeric	DecNCDEX	5680	5718	5654	5706	5603	5629	5667	5693	5731	5757	5795
Cardamom	DecMCX	1500	1500	1500	1500	1500	1500	1500	1500	1500	1500	1500
Dhaniya	DecNCDEX	6550	6604	6538	6570	6471	6505	6537	6571	6603	6637	6669
Menthaoil	NovMCX	950.0	950.0	942.7	946.8	936	939	943	947	950	954	958
PULSES												
Chana	DecNCDEX	5235	5235	5169	5191	5096	5132	5162	5198	5228	5264	5294
Guarseed	DecNCDEX	4112	4145	4100	4109	4046	4073	4091	4118	4136	4163	4181
Guargum	DecNCDEX	6222	6272	6180	6209	6077	6128	6169	6220	6261	6312	6353
OIL & OIL SEEDS												
Soybean	DecNCDEX	4485	4565	4474	4484	4359	4417	4450	4508	4541	4599	4632
RM seed	DecNCDEX	6227	6255	6163	6182	6053	6108	6145	6200	6237	6292	6329
CPO	NovMCX	946.0	948.8	931.1	932.3	908	920	926	937	944	955	961
Soyoil	DecNCDEX	1075.0	1095.0	1065.2	1071.3	1030	1065	1059	1077	1089	1089	1119
Castor seed	DecNCDEX	4680	4732	4650	4726	4591	4621	4673	4703	4755	4785	4837
CEREALS												
Wheat	DecNCDEX	1789	1789	1789	1789	1789	1789	1789	1789	1789	1789	1789
Barley	DecNCDEX	1457	1457	1457	1457	1457	1457	1457	1457	1457	1457	1457
OTHERS												
Cocud^	DecNCDEX	1944	2019	1940	2019	1887	1914	1966	1993	2045	2072	2124
Kapas	Apr21 NCDEX	1169.0	1201.5	1165.0	1194.5	1136	1151	1173	1187	1209	1224	1246
Cotton	NovMCX	19950	20090	19880	20020	19693	19787	19903	19997	20113	20207	20323
Rubber	DecICEX	15578	15578	15578	15578	15578	15578	15578	15578	15578	15578	15578

Pivot Point: A predictive indicator of the market which is calculated as an average of significant prices from the performance of a market in the prior trading period.
 An open above the pivot point is generally considered bullish and vice versa.
 S1, S2 & S3 are supports and R1, R2, and R3 are resistances from where a turnaround can be anticipated.
 *Open, High, Low and Close prices of previous trading day / ^ Cottonseed Oil Cake



Strong bias or bullish



Choppy or Sideways



Weak bias or bearish



Mild bullish bias



Mild bearish bias

TRADING SIGNALS

Commodities	Intraday	Overall	Volatility		Short term		Medium term		Long term	
	View	View	1 day	Annualised	3 day EMA	5 day EMA	13 day EMA	22 day EMA	45 day EMA	60 day EMA
Pepper Dec ICEX	POSITIVE	HIGHLY POSITIVE	0.45%	7.1%	POSITIVE	POSITIVE	POSITIVE	POSITIVE	POSITIVE	POSITIVE
Jeera Dec NCDEX	POSITIVE	NEGATIVE	0.83%	13.1%	POSITIVE	POSITIVE	NEGATIVE	NEGATIVE	NEGATIVE	NEGATIVE
Turmeric Dec NCDEX	POSITIVE	NEGATIVE	0.72%	11.4%	POSITIVE	POSITIVE	NEGATIVE	NEGATIVE	NEGATIVE	NEGATIVE
Cardamom Dec MCX	FLAT/CHOPPY	NEGATIVE	0.00%	0.0%	FLAT	FLAT	FLAT	FLAT	NEGATIVE	NEGATIVE
Dhaniya Dec NCDEX	FLAT/CHOPPY	NEGATIVE	0.78%	12.4%	POSITIVE	NEGATIVE	NEGATIVE	NEGATIVE	NEGATIVE	NEGATIVE
Chana Dec NCDEX	NEGATIVE	HIGHLY NEGATIVE	1.07%	17.0%	NEGATIVE	NEGATIVE	NEGATIVE	NEGATIVE	NEGATIVE	NEGATIVE
Guarseed10 Dec NCDEX	FLAT/CHOPPY	NEGATIVE	1.23%	19.5%	POSITIVE	NEGATIVE	NEGATIVE	NEGATIVE	NEGATIVE	NEGATIVE
Guargum Dec NCDEX	FLAT/CHOPPY	NEGATIVE	1.56%	24.8%	POSITIVE	NEGATIVE	NEGATIVE	NEGATIVE	NEGATIVE	NEGATIVE
Soybean Dec NCDEX	POSITIVE	HIGHLY POSITIVE	1.17%	18.6%	POSITIVE	POSITIVE	POSITIVE	POSITIVE	POSITIVE	POSITIVE
Ref. Soyoil Dec NCDEX	FLAT/CHOPPY	POSITIVE	0.93%	14.8%	NEGATIVE	POSITIVE	POSITIVE	POSITIVE	POSITIVE	POSITIVE
RMseed Dec NCDEX	NEGATIVE	FLAT/CHOPPY	1.04%	16.6%	NEGATIVE	NEGATIVE	NEGATIVE	POSITIVE	POSITIVE	POSITIVE
CPO Nov MCX	FLAT/CHOPPY	POSITIVE	1.17%	18.5%	NEGATIVE	POSITIVE	POSITIVE	POSITIVE	POSITIVE	POSITIVE
Castor Dec NCDEX	POSITIVE	HIGHLY POSITIVE	1.10%	17.4%	POSITIVE	POSITIVE	POSITIVE	POSITIVE	POSITIVE	POSITIVE
Kapas21 Apr NCDEX	POSITIVE	HIGHLY POSITIVE	0.97%	15.5%	POSITIVE	POSITIVE	POSITIVE	POSITIVE	POSITIVE	POSITIVE
Cotton Nov MCX	POSITIVE	HIGHLY POSITIVE	0.91%	14.5%	POSITIVE	POSITIVE	POSITIVE	POSITIVE	POSITIVE	POSITIVE
Cocudakl Dec NCDEX	POSITIVE	HIGHLY POSITIVE	1.78%	28.2%	POSITIVE	POSITIVE	POSITIVE	POSITIVE	POSITIVE	POSITIVE
Wheat Dec NCDEX	NEGATIVE	POSITIVE	0.55%	8.7%	NEGATIVE	FLAT	POSITIVE	POSITIVE	POSITIVE	POSITIVE
Barley Dec NCDEX	FLAT/CHOPPY	POSITIVE	1.00%	15.9%	FLAT	FLAT	POSITIVE	POSITIVE	POSITIVE	POSITIVE
Menthaoil Nov MCX	NEGATIVE	NEGATIVE	0.57%	9.1%	FLAT	NEGATIVE	NEGATIVE	NEGATIVE	NEGATIVE	NEGATIVE
Rubber Dec ICEX	FLAT/CHOPPY	POSITIVE	0.90%	14.2%	FLAT	FLAT	POSITIVE	POSITIVE	POSITIVE	POSITIVE

Trading signals is prepared based on statistical analysis and is purely on technical indicators like exponential moving averages (EMAs), Relative strength Index (RSI) and stochastic, putting altogether provides an idea about intraday, short, medium and long term trend of the commodities. It also signals the risk of an investment in both agricultural and global commodities as well. Based on all listed indicators above, investors were able to fix a daily, near-term and long term trends. However, must be cautious especially for real-time intraday traders/jobbers.

Trading Strategy based on EMA

Trading strategies mentioned in the report is mainly based on 3, 5, 13, 22, 45 & 60 days exponential Moving Averages. 3 and 5 day EMA has taken for developing Intraday trading strategy, 13 days and 22 days EMA for Short term and Medium term, while 45,60 days EMA for Long term. Here, we use EMAs for POSITIVE and NEGATIVE signals. POSITIVE signal is formed when a short-term moving average (eg: 30 day) crosses from below a longer-term average (eg: 60 day), which is considered bullish. Likewise, NEGATIVE signal is formed when a short-term moving average (eg: 30 day) crosses from above a longer-term moving average (eg: 60 day), which is considered bearish.

Intraday and Overall view The section is consist of both Intraday and Overall view. The Intraday view is calculated by netting out of POSITIVES/NEGATIVES/FLAT signals formed in the short term trend. On the another part, Overall view is calculated by netting out number of POSITIVES/NEGATIVES/FLAT signals formed in the short, Medium and long term trend.

Volatility is a measure for dispersion of price of a financial instrument over a period of time by using Standard deviation and annualised actual volatility. Standard deviation is used to calculate one day volatility. Whereas, Annualized Actual Volatility (AAV) is measured as annualized standard deviation of the continuously compounded daily returns of the asset. Generally the thumb rule is that, higher the volatility higher the risk of the asset. See the table below the range risk ratings.

Annualised Volatility >	Risk %	Ratings	Risk %	Ratings	Risk %	Ratings	Risk %	Ratings	Risk %	Ratings
> 35%	> 35%	Very High risk	27 to 34%	High risk	20 to 26%	Moderate risk	11 to 19%	Low risk	1 to 10%	Very Low risk

GENERAL DISCLOSURES & DISCLAIMERS:

CERTIFICATION,

We, Vinod T P, Hareesh V and Anu V Pai, employee of Geojit Financial Services Limited (GFSL), author of this report, hereby certify that all the views expressed in this research report (report) reflect my/ our personal views about any or all of the subject issuer or securities/ commodities.

DISCLAIMER

This report has been prepared by GFSL and the report & its contents are the exclusive property of GFSL and the recipient cannot tamper with the report or its contents in any manner and the said report, shall in no case, be further distributed to any third party for commercial use, with or without consideration.

GFSL has taken steps to ensure that facts in this report are based on reliable information but cannot testify, nor make any representation or warranty, express or implied, to the accuracy, contents or data contained within this report. It is hereby confirmed that wherever GFSL has employed a rating system in this report, the rating system has been clearly defined including the time horizon and benchmarks on which the rating is based.

Descriptions of any Commodity or Commodities mentioned herein are not intended to be complete and this report is not, and should not be construed as an offer or solicitation of an offer, to buy or sell any commodity or other financial instruments. GFSL has not taken any steps to ensure that the commodity/(ies) referred to in this report are suitable for any particular investor. This Report is not to be relied upon in substitution for the exercise of independent judgment. Opinions or estimates expressed are current opinions as of the original publication date appearing on this Report and the information, including the opinions and estimates contained herein, are subject to change without notice. GFSL is under no duty to update this report from time to time.

RISK DISCLOSURE

Geojit Financial Services Limited and/or its Affiliates and its officers, directors and employees including the analyst/authors shall not be in any way be responsible for any loss or damage that may arise to any person from any inadvertent error in the information contained in this report. Investors may lose his/her entire investment under certain market conditions so before acting on any advice or recommendation in these material, investors should consider whether it is suitable for their particular circumstances and, if necessary, seek professional advice. This report does not take into account the specific investment objectives, financial situation/circumstances and the particular needs of any specific person who may receive this document. The user assumes the entire risk of any use made of this information. Each recipient of this report should make such investigation as it deems necessary to arrive at an independent evaluation of an investment in the Commodity/(ies) referred to in this report (including the merits and risks involved). The price, volume and income of the investments referred to in this report may fluctuate and investors may realize losses that may exceed their original capital.

The investments or services contained or referred to in this report may not be suitable for all equally and it is recommended that an independent investment advisor be consulted. In addition, nothing in this report constitutes investment, legal, accounting or tax advice or a representation that any investment or strategy is suitable or appropriate to individual circumstances or otherwise constitutes a personal recommendation of GFSL.

REGULATORY DISCLOSURES:

Geojit Financial Services Limited's Associates consists of companies such as Geojit Technologies Private Limited (GTPL- Software Solutions provider), Geojit Credits Private Limited (GCPL- NBFC Services provider), Geojit Investment Services Limited (GISL- Corporate Agent for Insurance products), Geojit Financial Management Services Private Limited (GFMSL) & Geojit Financial Distribution Private Limited (GFDPL), (Distributors of Insurance and MF Units). In the context of the SEBI Regulations on Research Analysts (2014), Geojit Financial Services Limited affirms that we are a SEBI registered Research Entity and we issue research reports /research analysis etc that are prepared by our Research Analysts. We also affirm and undertake that no disciplinary action has been taken against us or our Analysts in connection with our business activities.

In compliance with the above mentioned SEBI Regulations, the following additional disclosures are also provided which may be considered by the reader before making an investment decision:

1. Disclosures regarding Ownership:

GFSL confirms that:

It/its associates have no financial interest or any other material conflict in relation to the subject Commodity futures covered herein at the time of publication of this report.

Further, the Research Analyst confirms that:

He, his associates and his relatives have no financial interest in the subject Commodity futures covered herein, and they have no other material conflict in the subject Commodity at the time of publication of this report.

2. Disclosures regarding Compensation:

During the past 12 months, GFSL or its Associates have not received any compensation or other benefits from any entity/ third party in connection with the Commodity futures mentioned in this report.

3. Disclosure regarding the Research Analyst's connection with the Commodity futures:

It is affirmed that we, Vinod T P, Hareesh V and Anu V Pai, employed as Research Analysts by GFSL and engaged in the preparation of this report have no substantial ownership or financial interest over any Commodity futures mentioned in the report.

4. Disclosure regarding Market Making activity:

Neither GFSL nor its Research Analysts have engaged in market making activities for the subject Commodity futures.

Copyright in this report vests exclusively with GFSL

Geojit Financial Services Ltd., 34/659-P, Civil Line Road, Padivattom, Kochi - 682024
Toll-Free Number: 1800-425-5501 / 1800-103-5501, Paid Number: 91 - 484 - 2901000
Research Entity SEBI Registration Number: INH200000345
Email id: customercare@geojit.com, Web: www.geojit.com

SEBI Stock Broker Registration No INZ000104737, Research Entity SEBI Reg No: INH200000345, Investment Adviser SEBI Reg No: INA200002817, Portfolio Manager: INP000003203, SEBI Registration No. Stock Broker: INZ000104737 / Depository Participant: IN-DP-325-2017, ARN Regn.Nos:0098, IRDA Corporate Agent (Composite) No.: CA0226.